

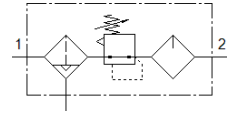
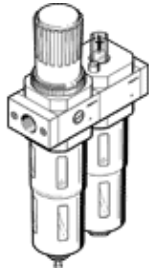
# Service unit FRC-1/4-D-O-MIDI-A

Part number: 186501  
Classic - do not use for new projects

FESTO

Filter/regulator/lubricator combination, bar, 40 µm filter, with metal bowl guard. With automatic condensate drain. Without pressure gauge.

Modern alternatives can be found by entering the first four characters of the type code in the search field.



## Data sheet

| Feature                                 | Value   |
|---|---|
| Size                                    | Midi  |
| Series                                  | D   |
| Actuator lock                           | Rotary knob with lock   |
| Assembly position                       | Vertical +/- 5°   |
| Condensate drain                        | fully automatic   |
| Design structure                        | Filter regulator with pressure gauge<br>proportional standard mist lubricator |
| Max. condensate volume                  | 43 cm <sup>3</sup>  |
| Grade of filtration                     | 40 µm   |
| Bowl guard                              | Metal bowl guard  |
| Pressure gauge                          | Prepared for G1/4   |
| Working pressure                        | 2 ... 12 bar  |
| Pressure regulation range               | 0.5 ... 12 bar  |
| Max. pressure hysteresis                | 0.2 bar   |
| Standard nominal flow rate              | 1,500 l/min   |
| Operating medium                        | Compressed air to ISO 8573-1:2010 [7:9:-]<br>Inert gases                      |
| Note on operating and pilot medium      | Lubricated operation possible (subsequently required for further operation)   |
| Corrosion resistance classification CRC | 2 - Moderate corrosion stress   |
| PWIS conformity                         | VDMA24364-B1/B2-L   |
| Air purity class at output              | Compressed air to ISO 8573-1:2010 [7:8:-]<br>Inert gases                      |
| Medium temperature                      | -10 ... 60 °C   |
| Ambient temperature                     | -10 ... 60 °C   |
| Product weight                          | 1,350 g   |
| Mounting type                           | Line installation<br>with accessories   |
| Pneumatic connection, port 1            | G1/4  |
| Pneumatic connection, port 2            | G1/4  |
| Materials note                          | Conforms to RoHS  |
| Material housing                        | Zinc die-casting  |
| Material bowl                           | PC  |