

# Service unit FRC-3/8-D-MIDI-KB-A

Part number: 185810

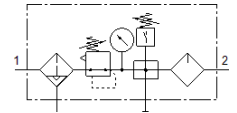
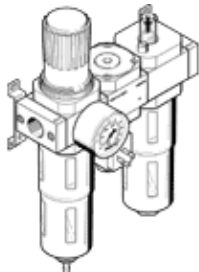
Classic - do not use for new projects

consisting of filter regulator, distributor module with pressure switch but without socket, and lubricator with mounting brackets.

With automatic condensate drain and metal bowl guard.

Modern alternatives can be found by entering the first four characters of the type code in the search field.

FESTO



## Data sheet

| Feature                                 | Value  |
|---|--|
| Size                                    | Midi   |
| Series                                  | D  |
| Actuator lock                           | Rotary knob with lock  |
| Assembly position                       | Vertical +/- 5°  |
| Grade of filtration                     | 40 µm  |
| Condensate drain                        | fully automatic  |
| Design structure                        | Branching module<br>Pressure sensor<br>Filter regulator with pressure gauge<br>proportional standard mist lubricator |
| Max. condensate volume                  | 43 cm <sup>3</sup>   |
| Bowl guard                              | Metal bowl guard   |
| Pressure gauge                          | with pressure gauge  |
| Working pressure                        | 2 ... 12 bar   |
| Pressure regulation range               | 0.5 ... 12 bar   |
| Max. pressure hysteresis                | 0.35 bar   |
| Standard nominal flow rate              | 2,100 l/min  |
| Operating medium                        | Compressed air in accordance with ISO8573-1:2010 [-:-:-]<br>Inert gases  |
| Corrosion resistance classification CRC | 2 - Moderate corrosion stress  |
| PWIS conformity                         | VDMA24364-B1/B2-L  |
| Air purity class at output              | Compressed air in accordance with ISO8573-1:2010 [7:4:-]<br>Inert gases  |
| Medium temperature                      | -10 ... 60 °C  |
| Ambient temperature                     | -10 ... 60 °C  |
| Product weight                          | 2,600 g  |
| Mounting type                           | Line installation<br>with accessories<br>Optional  |
| Pneumatic connection, port 1            | G3/8   |
| Pneumatic connection, port 2            | G3/8   |
| Material housing                        | Zinc die-casting   |
| Material bowl                           | PC   |