

Solenoid valve

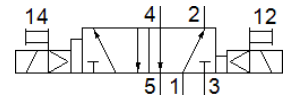
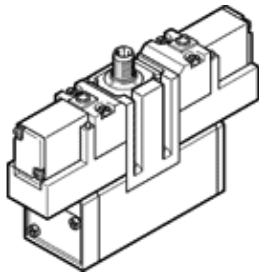
JMEBDH-5/2-D-1-ZSR-C

Part number: 184496

Product to be discontinued

FESTO

With dominating signal, with central plug connector



Data sheet

Feature	Value
Valve function	5/2 bistable-dominant
Type of actuation	electrical
Width	42 mm
Standard nominal flow rate	1,200 l/min
Working pressure	2 ... 10 bar
Design structure	Piston slide
Protection class	IP65
Nominal size	8 mm
Grid dimension	43 mm
Exhaust-air function	throttleable
Sealing principle	soft
Assembly position	Any
Conforms to standard	ISO 5599-1
Manual override	Pushing
ISO code	169
Type of piloting	Piloted
Pilot air supply	Internal
Flow direction	non reversible
Freedom from overlap	Yes
Note on forced dynamisation	Switching frequency at least once a week
Operating status display	Yellow LED
Switching time reversal	13 ms
Duty cycle	100%
Max. positive test pulse with logic 0	2,600 µs
Max. negative test pulse with logic 1	1,200 µs
Characteristic coil data	24 V DC: 2.5 W
Permissible voltage fluctuation	+/- 10 %
Operating medium	Compressed air in accordance with ISO8573-1:2010 [7:4:4]
Note on operating and pilot medium	Lubricated operation possible (subsequently required for further operation)
Vibration resistance	Transport application test at severity level 1 in accordance with FN 942017-4 and EN 60068-2-6
Shock resistance	Shock test with severity level 2 in accordance with FN 942017-5 and EN 60068-2-27
Medium temperature	-5 ... 50 °C
Ambient temperature	-5 ... 50 °C
Product weight	600 g
Electrical connection	Central plug Round design M12x1
Mounting type	On subbase With through-hole and screw
Pilot exhaust port 82	Non-ducted
Pilot exhaust port 84	Non-ducted

Feature	Value
Pneumatic connection, port 1	Connection plate size 1 as per ISO 5599-1
Pneumatic connection, port 2	Connection plate size 1 as per ISO 5599-1
Pneumatic connection, port 3	Connection plate size 1 as per ISO 5599-1
Pneumatic connection, port 4	Connection plate size 1 as per ISO 5599-1
Pneumatic connection, port 5	Connection plate size 1 as per ISO 5599-1
Materials information for seals	HNBR NBR
Materials information, housing	Aluminum die cast