

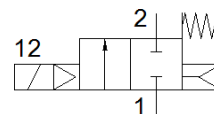
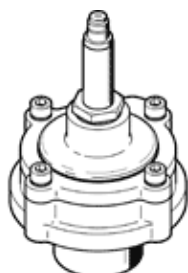
# pulse valve

## VZWE-F-M22C-M-G1-250-H

Part number: 1795190  
Product to be discontinued

FESTO

Type to be discontinued. Available until 2023. See Support Portal for alternative products.



### Data sheet

Feature	Value
Design structure	Straight version with flange Diaphragm valve
Type of actuation	electrical
Sealing principle	soft
Assembly position	Any
Mounting type	Tightened with thread
Process valve connection 1	G1
Process valve connection 2	Flange diameter: 59 mm
Nominal size	25 mm
Valve function	2/2 closed, monostable
Manual override	None
Flow direction	non reversible
Medium	Compressed air in accordance with ISO8573-1:2010 [7:4:4]
Differential pressure	0.35 bar
Type of reset	mechanical spring
Type of piloting	Piloted
Medium pressure	0.35 ... 8 bar
Note on operating and pilot medium	Lubricated operation not possible
Ambient temperature	-20 ... 60 °C
Flow rate Kv	22 m3/h
Switching time on	≤ 30 ms
Switching time off	≤ 100 ms
Materials note	Conforms to RoHS
PWIS conformity	VDMA24364 zone III
Material housing	Aluminum die cast
Material number for housing	EN AC-47100D
Material seals	NBR
Material screws	High alloy steel, non-corrosive
Material number, screw	1.4301
Material plunger tube	High alloy steel
Material membrane	NBR-PA
Product weight	430 g
Protection class	IP65
Corrosion resistance classification CRC	3 - High corrosion stress
Max. tightening torque, connecting thread	200 Nm