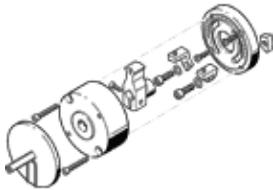


Limit stop kit KSM-6

Part number: 175833

FESTO

for semi-rotary drive DSM-6-..., swivel angle infinitely adjustable symmetrically about the centre position, with fine end-position adjustment.



Data sheet

Feature	Value
Size	6
Rotation angle adjustment range	0 ... 180 deg
Swivel angle	180 deg
Assembly position	Any
Fine adjustment	-5 deg
Design structure	Stop lever
Position detection	No
PWIS conformity	VDMA24364-B1/B2-L
Ambient temperature	0 ... 60 °C
Product weight	30 g
Material of cover	PA-reinforced
Material stops	High alloy steel, non-corrosive
Material housing	Aluminum Anodized