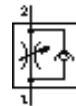
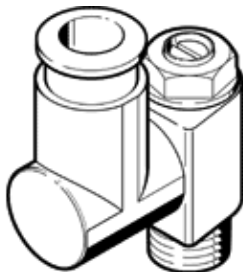


One-way flow control valve GRGZ-M5-QS-4-LF-C

Part number: 175067

FESTO

Supply-air flow control with precision flow control valve and QS push-in fitting.



Data sheet

Feature	Value
Valve function	One-way flow control function
Pneumatic connection, port 1	QS-4
Pneumatic connection, port 2	M5
Adjusting element	Slotted head screw
Mounting type	Threaded
Standard nominal flow rate in flow control direction	48 l/min
Standard nominal flow rate in non-return direction	40 ... 65 l/min
Working pressure	0.2 ... 10 bar
Ambient temperature	-10 ... 60 °C
Operating medium	Filtered, unlubricated compressed air, 40 µm filtration Filtered, lubricated compressed air, 40 µm filtration
Assembly position	Any
Standard flow rate in direction of flow control: 6 -> 0 bar	80 l/min
Standard flow rate in blocked direction: 6 -> 0 bar	65 ... 110 l/min
Medium temperature	-10 ... 60 °C
Max. tightening torque	1.5 Nm
Product weight	14 g
Materials information for screw-in stud	Nickel plated Brass
Materials information for seals	NBR
Release ring material data	POM
Regulating screw material data	Brass
Swivel joint material data	Zinc die-casting