

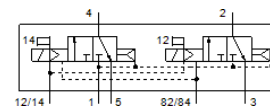
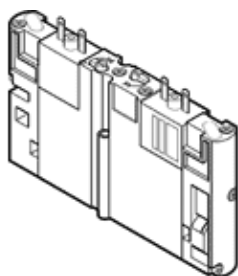
# Solenoid valve

## CPA14-M1H-2X3-GLS

Part number: 173943  
Product to be discontinued

FESTO

Type to be discontinued. Available until 2018. See Support Portal for alternative products.



## Data sheet

Feature	Value
Valve function	2x3/2 closed, monostable
Type of actuation	electrical
Width	14 mm
Standard nominal flow rate	550 l/min
Working pressure	3 ... 10 bar
Design structure	Piston slide
Type of reset	Air spring
Nominal size	5 mm
Exhaust-air function	not throttleable
Sealing principle	soft
Assembly position	Any
Manual override	with accessories, detenting
Type of piloting	Piloted
Flow direction	non reversible
Pilot pressure	3 ... 8 bar
b value	0.3
C value	2.3 l/sbar
Switching time off	28 ms
Switching time on	9 ms
Operating medium	Compressed air in accordance with ISO8573-1:2010 [7:4:4]
Note on operating and pilot medium	Lubricated operation possible (subsequently required for further operation)
Corrosion resistance classification CRC	2
Medium temperature	-5 ... 50 °C
Ambient temperature	-5 ... 50 °C
Mounting type	with through hole
Pneumatic connection, port 1	Subbase
Pneumatic connection, port 2	Subbase
Pneumatic connection, port 3	Subbase
Materials information for seals	NBR
Materials information, housing	Aluminum die cast