

# start valve

## HEE-1/8-D-MINI-24-NPT

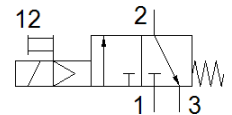
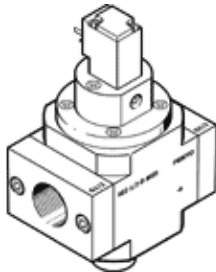
Part number: 173900

Classic - do not use for new projects

FESTO

Used in conjunction with service units.

Modern alternatives can be found by entering the first four characters of the type code in the search field.



## Data sheet

| Feature                                 | Value   |
|---|---|
| Grid dimension                          | 40 mm   |
| Design structure                        | Piston slide  |
| Type of actuation                       | electrical  |
| Sealing principle                       | soft  |
| Exhaust-air function                    | not throttleable  |
| Manual override                         | detenting   |
| Type of reset                           | mechanical spring   |
| Type of piloting                        | Piloted   |
| Valve function                          | 3/2 closed, monostable  |
| Working pressure                        | 2.5 ... 16 bar  |
| C value                                 | 4.4 l/sbar  |
| b value                                 | 0.44  |
| Standard nominal flow rate              | 1,000 l/min   |
| Duty cycle                              | 100 %   |
| Characteristic coil data                | 24 V DC: 3 W  |
| Permissible voltage fluctuation         | +/- 10 %  |
| Operating medium                        | Compressed air in accordance with ISO8573-1:2010 [7:4:4]<br>Inert gases     |
| Note on operating and pilot medium      | Lubricated operation possible (subsequently required for further operation) |
| Corrosion resistance classification CRC | 2 - Moderate corrosion stress   |
| Materials note                          | Conforms to RoHS  |
| PWIS conformity                         | VDMA24364-B1/B2-L   |
| Medium temperature                      | -10 ... 60 °C   |
| Ambient temperature                     | -10 ... 60 °C   |
| Mounting type                           | Line installation<br>with accessories                                       |
| Assembly position                       | Any   |
| Flow direction                          | non reversible  |
| Product weight                          | 223 g   |
| Pneumatic connection, port 1            | 1/8 NPT   |
| Pneumatic connection, port 2            | 1/8 NPT   |
| Pneumatic connection, port 3            | G1/8  |
| Air purity class at output              | Compressed air in accordance with ISO8573-1:2010 [7:4:4]<br>Inert gases     |
| Pilot air supply                        | Internal  |
| Electrical connection                   | Plug pattern type C to EN 175301-803<br>Plug<br>Per DIN EN 175301-803       |
| Signal status display                   | with accessories  |
| Material seals                          | NBR   |
| Material housing                        | Aluminum die cast   |