

# Filter regulator

## LFR-1/2-D-7-MIDI-A-NPT

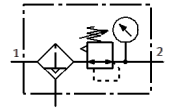
Part number: 173795

Classic - do not use for new projects

Outlet pressure max. 7 bar, with metal bowl guard and pressure gauge.  
With automatic condensate drain.

Modern alternatives can be found by entering the first four characters of the type code in the search field.

FESTO



### Data sheet

Feature	Value
Size	Midi
Series	D
Assembly position	Vertical
Grade of filtration	40 µm
Condensate drain	fully automatic
Max. condensate volume	43 cm <sup>3</sup>
Bowl guard	Metal bowl guard
Working pressure	2 ... 12 bar
Max. pressure hysteresis	0.2 bar
Standard nominal flow rate	3,900 l/min
Operating medium	Compressed air to ISO 8573-1:2010 [7:9:-] Inert gases
Note on operating and pilot medium	Lubricated operation possible (subsequently required for further operation)
Corrosion resistance classification CRC	2 - Moderate corrosion stress
PWIS conformity	VDMA24364-B1/B2-L
Storage temperature	-10 ... 60 °C
Air purity class at output	Compressed air in accordance with ISO8573-1:2010 [7:8:4] Inert gases
Medium temperature	5 ... 60 °C
Ambient temperature	5 ... 60 °C
Product weight	900 g
Mounting type	Line installation With mounting bracket Optional
Pneumatic connection, port 1	1/2 NPT
Pneumatic connection, port 2	1/2 NPT
Materials note	Conforms to RoHS
Material housing	Zinc die-casting
Material bowl	PC