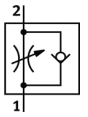
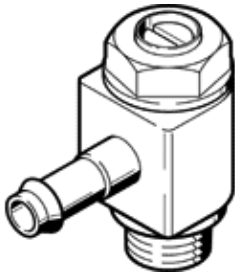


One-way flow control valve GRLA-M5-PK-3-B-CT

Part number: 165664

FESTO

For exhaust air flow control, with swivel joint.
Type to be discontinued. Available until 2011.



Data sheet

Feature	Value
Valve function	One-way flow control function for exhaust air
Pneumatic connection, port 1	PK-3
Pneumatic connection, port 2	M5
Adjusting element	Slotted head screw
Mounting type	Threaded
Standard nominal flow rate in flow control direction	83 l/min
Standard nominal flow rate in non-return direction	72 ... 83 l/min
Working pressure	0.2 ... 10 bar
Ambient temperature	-10 ... 60 °C
Operating medium	Filtered, unlubricated compressed air, 40 µm filtration Filtered, lubricated compressed air, 40 µm filtration
Authorization	Germanischer Lloyd
Assembly position	Any
Standard flow rate in direction of flow control: 6 -> 0 bar	140 l/min
Standard flow rate in blocked direction: 6 -> 0 bar	120 ... 140 l/min
Medium temperature	-10 ... 60 °C
Max. tightening torque	1.5 Nm
Product weight	10 g
Materials information for screw-in stud	Nickel plated
Materials note	Free of copper and PTFE
Materials information for seals	NBR
Regulating screw material data	Wrought Aluminum alloy
Swivel joint material data	Zinc die-casting