

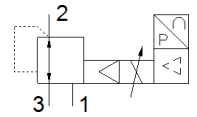
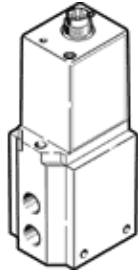
Proportional pressure regulator

MPPE-3-1/2- -B

Part number: 164332
Classic - do not use for new projects

FESTO

Modern alternatives can be found by entering the first four characters of the type code in the search field.



Data sheet

Feature	Value
Nominal diameter, pressurization	11 mm
Nominal diameter, exhaust	12 mm
Type of actuation	electrical
Sealing principle	soft
Assembly position	Any
Design structure	Piloted piston regulator
Safety instructions	MPPE-B safety position: If the power supply cable is interrupted, output pressure is maintained unregulated
Working pressure	0 ... 10 bar
Pressure regulation range	0 ... 10 bar
Inlet pressure 1	11 ... 12 bar
Max. pressure hysteresis	0.05 bar
Switching time off	535 ms
Switching time on	170 ms
Operating voltage range DC	18 ... 30 V
Reference voltage	10 V
Residual ripple	10 %
SETPOINT/ACTUAL values	Optional Voltage type 0 - 10 V Current type 4 - 20 mA
Operating medium	Compressed air in accordance with ISO8573-1:2010 [7:4:4] Inert gases
Authorization	RCM Mark
CE symbol (see declaration of conformity)	according to EU-EMV guideline
Corrosion resistance classification CRC	2 - Moderate corrosion stress
PWIS conformity	VDMA24364-B2-L
Medium temperature	0 ... 60 °C
Protection class	IP65
Ambient temperature	0 ... 50 °C
Product weight	2,400 g
Electrical connection	8-pin M16x0,75 Plug to DIN 45326 Round design
Mounting type	with through hole
Pneumatic connection, port 1	G1/2
Pneumatic connection, port 2	G1/2
Pneumatic connection, port 3	G1/2
Materials note	Conforms to RoHS
Material housing	Wrought Aluminum alloy
Material membrane	NBR