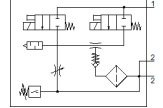
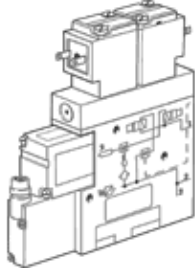


# Vacuum generator VADMI-300-N

Part number: 162535  
Classic - do not use for new projects

FESTO

With additional vacuum switch, NPN design  
Modern alternatives can be found by entering the first four characters of the type code in the search field.



## Data sheet

| Feature  | Value   |
|--|---|
| Nominal size, Laval nozzle                                       | 3 mm  |
| Grid dimension   | 22 mm   |
| Design, silencer   | closed  |
| Assembly position  | Any   |
| Ejector characteristic   | High vacuum   |
| Grade of filtration  | $\leq 40 \mu\text{m}$   |
| Manual override  | Pushing   |
| Integrated function  | Ejector pulse valve, electrical<br>Flow control valve<br>Electrical on-off valve<br>Filter<br>Non-return valve<br>Vacuum switch |
| Measured variable  | Relative pressure   |
| Measuring principle  | Piezoresistive  |
| Switching element function                                       | Normally open contact   |
| Switching function   | Threshold value comparator  |
| Valve function   | closed  |
| Polarity protected   | for all electrical connections  |
| Type of display  | LED   |
| Hysteresis setting range   | -50 ... -5 kPa  |
| Hysteresis adjustment range [bar]                                | -0.5 ... -0.05 bar  |
| Hysteresis setting range   | -7.25 ... -0.725 psi  |
| Setting options  | Potentiometer   |
| Operating status display   | Optical   |
| Threshold value setting range                                    | -90 ... 0 kPa   |
| Threshold setting range  | -0.9 ... 0 bar  |
| Threshold value setting range                                    | -13.05 ... 0 psi  |
| Operating pressure MPa   | 0.2 ... 0.8 MPa   |
| Working pressure   | 2 ... 8 bar   |
| Operating pressure   | 29 ... 116 psi  |
| Max. vacuum  | 85 %  |
| Nominal operating pressure                                       | 0.6 MPa   |
| Nominal working pressure   | 6 bar   |
| Nominal operating pressure (psi)                                 | 87 psi  |
| Overload range   | 5 bar   |
| Air supply time at nominal operating pressure with ejector pulse | 0.2 s   |
| Operating voltage range DC                                       | 21.6 ... 26.4 V   |
| Duty cycle   | 100 %   |
| Switch output  | NPN   |
| Authorization  | RCM Mark<br>c UL us - Recognized (OL)   |

| <b>Feature</b>                               | <b>Value</b>   |
|--|--|
| CE symbol (see declaration of conformity)    | according to EU-EMV guideline                                  |
| UKCA marking (see declaration of conformity) | To UK instructions for EMC                                     |
| Operating medium                             | Compressed air in accordance with ISO8573-1:2010 [7:4:4]       |
| Note on operating and pilot medium           | Lubricated operation not possible                              |
| Corrosion resistance classification CRC      | 2 - Moderate corrosion stress                                  |
| PWIS conformity                              | VDMA24364-B1/B2-L  |
| Medium temperature                           | 0 ... 60 °C  |
| Protection class                             | IP65   |
| Ambient temperature                          | 0 ... 50 °C  |
| Product weight                               | 380 g  |
| Pressure measurement range                   | 0 ... 0.1 MPa  |
| Pressure measuring range                     | 0 ... 1 bar  |
| Pressure measurement range                   | 0 ... 14.5 psi   |
| Electrical connection                        | 4-pin<br>M8x1<br>Plug  |
| Mounting type                                | with through hole<br>with internal (female) thread<br>Optional |
| Pneumatic connection, port 1                 | G1/4   |
| Pneumatic connection, port 3                 | Integrated silencer  |
| Vacuum connection                            | G3/8   |
| Materials note                               | Conforms to RoHS   |
| Material seals                               | NBR  |
| Material receiver nozzle                     | Nickel-plated brass  |
| Material filter                              | PA   |
| Material filter housing                      | PC   |
| Material housing                             | Wrought Aluminum alloy   |
| Material silencer                            | PE<br>POM  |
| Material piston                              | POM  |
| Material transmitter nozzle                  | Nickel-plated brass  |