

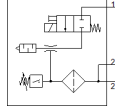
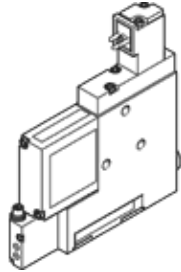
Vacuum generator

VADM-140-N

Part number: 162519
Classic - do not use for new projects

FESTO

Modern alternatives can be found by entering the first four characters of the type code in the search field.



Data sheet

Feature	Value
Nominal size, Laval nozzle	1.4 mm
Grid dimension	22 mm
Design, silencer	closed
Assembly position	Any
Ejector characteristic	High vacuum
Grade of filtration	$\leq 40 \mu\text{m}$
Manual override	Pushing
Integrated function	Electrical on-off valve Filter Vacuum switch
Measured variable	Relative pressure
Measuring principle	Piezoresistive
Switching element function	Normally open contact
Switching function	Threshold value comparator
Valve function	closed
Polarity protected	for all electrical connections
Type of display	LED
Hysteresis setting range	-50 ... -5 kPa
Hysteresis adjustment range [bar]	-0.5 ... -0.05 bar
Hysteresis setting range	-7.25 ... -0.725 psi
Setting options	Potentiometer
Operating status display	Optical
Threshold value setting range	-90 ... 0 kPa
Threshold setting range	-0.9 ... 0 bar
Threshold value setting range	-13.05 ... 0 psi
Operating pressure MPa	0.2 ... 0.8 MPa
Working pressure	2 ... 8 bar
Operating pressure	29 ... 116 psi
Max. vacuum	85 %
Nominal operating pressure	0.6 MPa
Nominal working pressure	6 bar
Nominal operating pressure (psi)	87 psi
Air supply time at nominal working pressure	0.69 s
Operating voltage range DC	21.6 ... 26.4 V
Duty cycle	100 %
Switch output	NPN
Authorization	RCM Mark c UL us - Recognized (OL)
CE symbol (see declaration of conformity)	according to EU-EMV guideline
Operating medium	Compressed air in accordance with ISO8573-1:2010 [7:4:4]
Note on operating and pilot medium	Lubricated operation not possible
Corrosion resistance classification CRC	2 - Moderate corrosion stress
PWIS conformity	VDMA24364-B1/B2-L

Feature	Value
Medium temperature	0 ... 60 °C
Protection class	IP65
Ambient temperature	0 ... 50 °C
Product weight	300 g
Pressure measurement range	0 ... 0.1 MPa
Pressure measuring range	0 ... 1 bar
Pressure measurement range	0 ... 14.5 psi
Electrical connection	4-pin M8x1 Plug
Mounting type	with through hole with internal (female) thread Optional
Pneumatic connection, port 1	G1/8
Pneumatic connection, port 3	Integrated silencer
Vacuum connection	G1/4
Materials note	Conforms to RoHS
Material seals	NBR
Material receiver nozzle	Nickel-plated brass
Material filter	PA
Material filter housing	PC
Material housing	Wrought Aluminum alloy
Material silencer	PE POM
Material piston	POM
Material transmitter nozzle	Nickel-plated brass