

# Solenoid valve

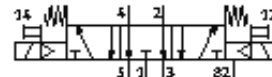
## MN2H-5/3E-D-01-110AC

Part number: 161890

FESTO

In accordance with ISO 15407/-1, with solenoid coil and manual override, without plug socket.

Type to be discontinued. Available until 2009.



### Data sheet

| Feature                                 | Value  |
|---|--|
| Valve function                          | 5/3 exhausted  |
| Type of actuation                       | electrical   |
| Width                                   | 26 mm  |
| Standard nominal flow rate              | 1,000 l/min  |
| Working pressure                        | 3 ... 10 bar   |
| Design structure                        | Piston slide   |
| Type of reset                           | mechanical spring  |
| Protection class                        | IP65   |
| Authorization                           | Germanischer Lloyd   |
| Nominal size                            | 8 mm   |
| Grid dimension                          | 27 mm  |
| Exhaust-air function                    | throttleable   |
| Sealing principle                       | soft   |
| Assembly position                       | Any  |
| Conforms to standard                    | ISO 15407-1<br>VDMA 24563  |
| Manual override                         | with accessories, detenting  |
| Type of piloting                        | Piloted  |
| Pilot air supply                        | Internal   |
| Flow direction                          | non reversible   |
| Switching time off                      | 52 ms  |
| Switching time on                       | 23 ms  |
| Characteristic coil data                | 110 V AC: 50 Hz, switching power: 2 VA   |
| Operating medium                        | filtered compressed air, grade of filtration 40 µm, lubricated or unlubricated     |
| Corrosion resistance classification CRC | 2  |
| Medium temperature                      | -10 ... 50 °C  |
| Ambient temperature                     | -10 ... 50 °C  |
| Product weight                          | 340 g  |
| Electrical connection                   | Plug<br>to DIN 43650<br>Design C   |
| Mounting type                           | with through hole  |
| Pilot exhaust port 82/84                | Connection plate size 26 mm, according to ISO 15407-1<br>Subbase VDMA 24563 size 1 |
| Pneumatic connection, port 1            | Connection plate size 26 mm, according to ISO 15407-1<br>Subbase VDMA 24563 size 1 |
| Pneumatic connection, port 2            | Connection plate size 26 mm, according to ISO 15407-1<br>Subbase VDMA 24563 size 1 |
| Pneumatic connection, port 3            | Connection plate size 26 mm, according to ISO 15407-1<br>Subbase VDMA 24563 size 1 |
| Pneumatic connection, port 4            | Connection plate size 26 mm, according to ISO 15407-1                              |

| <b>Feature</b>                  | <b>Value</b>   |
|---------------------------------|--|
|                                 | Subbase VDMA 24563 size 1  |
| Pneumatic connection, port 5    | Connection plate size 26 mm, according to ISO 15407-1<br>Subbase VDMA 24563 size 1 |
| Materials information for seals | NBR  |
| Materials information, housing  | Aluminum die cast  |