

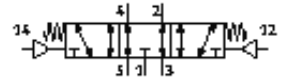
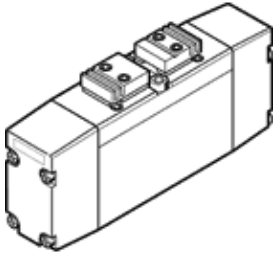
# Pneumatic valve

## VL-5/3E-D-01

Part number: 161065

FESTO

5/3-way function, center position exhausted  
Type to be discontinued. Available until 2009.



## Data sheet

Feature	Value
Valve function	5/3 exhausted
Type of actuation	pneumatic
Width	26 mm
Standard nominal flow rate	1,000 l/min
Working pressure	-0.9 ... 16 bar
Design structure	Piston slide
Type of reset	mechanical spring
Authorization	Germanischer Lloyd
Nominal size	8 mm
Grid dimension	27 mm
Exhaust-air function	throttleable
Sealing principle	soft
Assembly position	Any
Conforms to standard	ISO 15407-1 VDMA 24563
Manual override	None
Type of piloting	direct
Flow direction	reversible
Pilot pressure	3 ... 16 bar
Switching time off	38 ms
Switching time on	13 ms
Operating medium	filtered compressed air, grade of filtration 40 µm, lubricated or unlubricated Vacuum
Corrosion resistance classification CRC	2
Medium temperature	-10 ... 60 °C
Pilot medium	filtered compressed air, grade of filtration 40 µm, lubricated or unlubricated
Ambient temperature	-10 ... 60 °C
Product weight	330 g
Mounting type	with through hole
Pilot exhaust port 82/84	Connection plate size 26 mm, according to ISO 15407-1 Subbase VDMA 24563 size 1
Pneumatic connection, port 1	Connection plate size 26 mm, according to ISO 15407-1 Subbase VDMA 24563 size 1
Pneumatic connection, port 2	Connection plate size 26 mm, according to ISO 15407-1 Subbase VDMA 24563 size 1
Pneumatic connection, port 3	Connection plate size 26 mm, according to ISO 15407-1 Subbase VDMA 24563 size 1
Pneumatic connection, port 4	Connection plate size 26 mm, according to ISO 15407-1 Subbase VDMA 24563 size 1
Pneumatic connection, port 5	Connection plate size 26 mm, according to ISO 15407-1 Subbase VDMA 24563 size 1
Materials information for seals	NBR
Materials information, housing	Aluminum die cast