

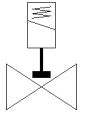
Solenoid valve

VZWD-L-M22C-M-N14-60-V-3AP4-4-R1

Part number: 1492097

FESTO

Directly actuated, NPT1/4" connection.



Data sheet

Feature	Value
Design structure	Directly actuated poppet valve
Type of actuation	electrical
Sealing principle	soft
Assembly position	Any
Mounting type	Line installation
Process valve connection	1/4 NPT
Electrical connection	Plug pattern type A to EN 175301-803 Plug to EN 175301-803 Cubic design
Nominal size	6 mm
Valve function	2/2 closed, monostable
Manual override	None
Flow direction	non reversible
Medium	Compressed air in accordance with ISO8573-1:2010 [7:4:4] Inert gases Mineral oil Water Neutral fluids Other media on request
Nominal pressure of process valve	100
Differential pressure (MPa)	0 MPa
Differential pressure	0 bar
Differential pressure (psi)	0 psi
Characteristic coil data	230 V AC: 50/60 Hz, pick-up power 18 VA, holding power 15 VA
Insulation class	F
Permissible voltage fluctuation	+/- 10 %
Duty cycle	100 %
Type of reset	mechanical spring
Type of piloting	direct
Pressure of medium	0 ... 0.4 MPa
Medium pressure	0 ... 4 bar
Pressure of medium psi	0 ... 58 psi
Max. viscosity	22 mm ² /s
Medium temperature	-10 ... 80 °C
Ambient temperature	-10 ... 35 °C
Leak rate in accordance with EN 12266-1	A
Flow rate Kv	0.4 m ³ /h
Standard nominal flow rate	430 l/min
Switching time on	20 ms
Switching time off	18 ms
Materials note	Conforms to RoHS
PWIS conformity	VDMA24364 zone III
Material housing	High alloy steel, non-corrosive

Feature	Value
Material number for housing	1.4305
Material seals	FPM
Product weight	650 g
CE symbol (see declaration of conformity)	according to EU low voltage guideline
UKCA marking (see declaration of conformity)	To UK instructions for electrical equipment
Protection class	IP65
Corrosion resistance classification CRC	3 - High corrosion stress