

# Solenoid valve

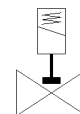
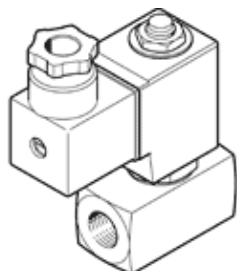
## VZWD-L-M22C-M-G14-60-V-1P4-4

Part number: 1491847

★ Core product range

Directly actuated, G1/4" connection.

FESTO



## Data sheet

Feature	Value
Design structure	Directly actuated poppet valve
Type of actuation	electrical
Sealing principle	soft
Assembly position	Any
Mounting type	Line installation
Process valve connection	G1/4
Electrical connection	Plug pattern type A to EN 175301-803 Plug to EN 175301-803 Cubic design
Nominal size	6 mm
Valve function	2/2 closed, monostable
Manual override	None
Flow direction	non reversible
Medium	Compressed air in accordance with ISO8573-1:2010 [7:4:4] Inert gases Mineral oil Water Neutral fluids Other media on request
Nominal pressure of process valve	100
Differential pressure (MPa)	0 MPa
Differential pressure	0 bar
Differential pressure (psi)	0 psi
Characteristic coil data	24 V DC: 11 W
Insulation class	H
Permissible voltage fluctuation	+/- 10 %
Duty cycle	100 %
Type of reset	mechanical spring
Type of piloting	direct
Pressure of medium	0 ... 0.4 MPa
Medium pressure	0 ... 4 bar
Pressure of medium psi	0 ... 58 psi
Max. viscosity	22 mm <sup>2</sup> /s
Medium temperature	-10 ... 80 °C
Ambient temperature	-10 ... 35 °C
Leak rate in accordance with EN 12266-1	A
Flow rate Kv	0.4 m <sup>3</sup> /h
Standard nominal flow rate	430 l/min
Switching time on	20 ms
Switching time off	18 ms
Materials note	Conforms to RoHS
PWIS conformity	VDMA24364 zone III
Material housing	Brass

<b>Feature</b>	<b>Value</b>
Material number for housing	CW614N
Material seals	FPM
Product weight	600 g
Protection class	IP65
Corrosion resistance classification CRC	1 - Low corrosion stress