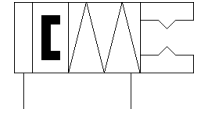
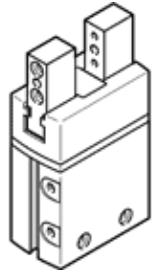


Parallel gripper DHPS-20-A-NC

Part number: 1254048

FESTO



Data sheet

Feature	Value
Size	20
Stroke per gripper jaw	6.5 mm
Max. replacement accuracy	≤ 0.2 mm
Max. angular gripper jaw backlash ax,ay	< 0.5 deg
Max. gripper jaw backlash Sz	< 0.02 mm
Rotationally symmetrical	≤ 0.2 mm
Repetition accuracy, gripper	< 0.02 mm
Number of gripper fingers	2
Drive system	pneumatic
Assembly position	Any
Mode of operation	double-acting
Gripper function	Parallel
Gripper force back-up	On closing
Design structure	Lever guided motion sequence
Guide	Plain-bearing guide
Position detection	For proximity sensor
Operating pressure MPa	0.4 ... 0.8 MPa
Working pressure	4 ... 8 bar
Operating pressure	58 ... 116 psi
Max. operating frequency of gripper	3 Hz
Min. opening time at 0.6 MPa (6 bar, 87 psi)	72 ms
Min. closing time at 0.6 MPa (6 bar, 87 psi)	62 ms
Max. mass per external gripper finger	250 g
Operating medium	Compressed air in accordance with ISO8573-1:2010 [7:4:4]
Note on operating and pilot medium	Lubricated operation possible (subsequently required for further operation)
Corrosion resistance classification CRC	1 - Low corrosion stress
PWIS conformity	VDMA24364-B2-L
RSBP classification to CD-0033	F5
Ambient temperature	5 ... 60 °C
Mass moment of inertia	1.494 kgcm ²
Max. force on gripper jaw Fz static	250 N
Max. torque at gripper Mx static	14 Nm
Max. torque at gripper My static	14 Nm
Max. torque at gripper Mz static	14 Nm
Lubrication interval for guide components	10 Mio SP
Product weight	387 g
Mounting type	Internal thread and centering sleeve With through-hole and centering sleeve Optional
Pneumatic connection	M5
Materials note	Conforms to RoHS
Material cover cap	PA
Material housing	Hard anodised wrought aluminium alloy
Material gripper jaws	High alloy steel, non-corrosive