

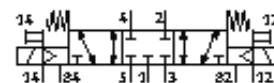
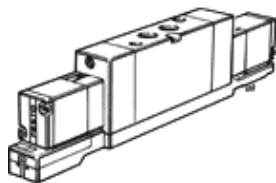
Solenoid valve

MVH-5/3G-1/8-S-B-VI

Part number: 118800

FESTO

With solenoid coil and manual override, without socket.



Data sheet

| Feature | Value |
|------------------------------|--|
| Valve function | 5/3 closed |
| Type of actuation | electrical |
| Standard nominal flow rate | 1,000 l/min |
| Working pressure | -0.9 ... 10 bar |
| Design structure | Piston slide Poppet seat |
| Type of reset | Air spring |
| Nominal size | 8 mm |
| Exhaust-air function | throttleable |
| Sealing principle | soft |
| Type of piloting | Piloted |
| Pilot air supply | external |
| Flow direction | reversible |
| Switching time off | 30 ms |
| Switching time on | 30 ms |
| Operating medium | Filtered compressed air, 5 µm filtration |
| Medium temperature | -5 ... 50 °C |
| Ambient temperature | -5 ... 50 °C |
| Mounting type | with through hole |
| Pilot exhaust port 82 | M5 |
| Pilot exhaust port 84 | M5 |
| Pneumatic connection, port 1 | Subbase G1/8 |
| Pneumatic connection, port 2 | G1/8 |
| Pneumatic connection, port 3 | Subbase G1/8 |
| Pneumatic connection, port 4 | G1/8 |
| Pneumatic connection, port 5 | Subbase |
| Materials note | Contains PWIS substances |