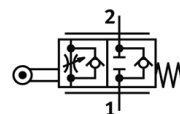
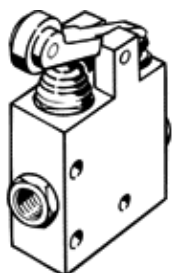


One-way flow control valve GG-1/8

Part number: 10890

FESTO

With roller lever and adjustable basic flow rate
Type to be discontinued. Available until 2011.



Data sheet

| Feature | Value |
|--|--|
| Valve function | One-way flow control function |
| Pneumatic connection, port 1 | G1/8 |
| Pneumatic connection, port 2 | G1/8 |
| Type of actuation | mechanical |
| Adjusting element | Roller lever |
| Mounting type | with through hole |
| Standard nominal flow rate in flow control direction | 280 l/min |
| Standard nominal flow rate in non-return direction | 240 ... 350 l/min |
| Working pressure | 0.3 ... 10 bar |
| Ambient temperature | -10 ... 60 °C |
| Materials information, housing | Wrought Aluminum alloy |
| Operating medium | Compressed air, filtered, unlubricated Filtered, lubricated air |
| Assembly position | Any |
| Storage temperature | -10 ... 60 °C |
| Medium temperature | -10 ... 60 °C |
| Product weight | 380 g |
| Materials note | Contains PWIS substances |
| Materials information for seals | NBR |