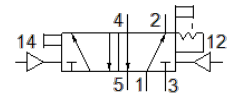
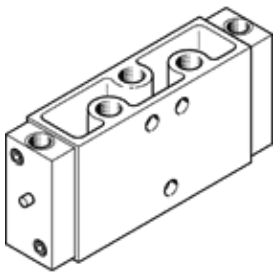


Pneumatic valve JH-5-1/8-NPT

Part number: 10878

FESTO



Data sheet

Feature	Value
Valve function	5/2 bistable
Type of actuation	pneumatic
Width	26 mm
Standard nominal flow rate	600 l/min
Operating pressure MPa	0 ... 1 MPa
Working pressure	0 ... 10 bar
Design structure	Poppet seat
Nominal size	5 mm
Grid dimension	27 mm
Exhaust-air function	throttleable
Sealing principle	soft
Assembly position	Any
Type of piloting	direct
Pilot air supply	external
Flow direction	non reversible
Lap	Underlap
Pilot pressure MPa	0.12 ... 1 MPa
Pilot pressure	1.2 ... 10 bar
Max. switching frequency	12 Hz
Switching time reversal	7 ms
Operating medium	Compressed air in accordance with ISO8573-1:2010 [7:4:4]
Note on operating and pilot medium	Lubricated operation possible (subsequently required for further operation)
Corrosion resistance classification CRC	1 - Low corrosion stress
PWIS conformity	VDMA24364-B2-L
Storage temperature	-20 ... 60 °C
Medium temperature	-10 ... 60 °C
Ambient temperature	-10 ... 60 °C
Product weight	330 g
Mounting type	on manifold rail with through hole Optional
Pilot air port 12	1/8 NPT
Pilot air port 14	1/8 NPT
Pneumatic connection, port 1	1/8 NPT
Pneumatic connection, port 2	1/8 NPT
Pneumatic connection, port 3	1/8 NPT
Pneumatic connection, port 4	1/8 NPT
Pneumatic connection, port 5	1/8 NPT
Materials note	Conforms to RoHS
Material seals	NBR TPE-U(PU)
Material housing	Aluminum die cast