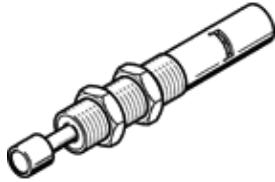
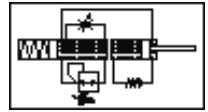


# Shock absorber YSR-16-20

Part number: 10868

FESTO

Adjustable, refillable



## Data sheet

Feature	Value
Size	16
Stroke	20 mm
Cushioning	adjustable hard characteristic
Assembly position	Any
Position detection	No
Max. impact speed	3 m/s
Reset time short	0.4 s
Reset time long	1 s
Mode of operation	single-acting pushing action
Corrosion resistance classification CRC	2
Ambient temperature	-10 ... 80 °C
Cushioning length	20 mm
Max. stop force	1,600 N
Max. energy consumption per stroke	32 J
Max. energy consumption per hour	130,000 J
Max. residual energy	0.16 J
Reset force	20 N
Product weight	240 g
Mounting type	with lock nut
Materials note	Free of copper and PTFE
Materials information for seals	NBR
Materials information, housing	Steel Galvanized
Materials information for piston rod	High alloy steel