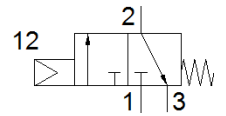
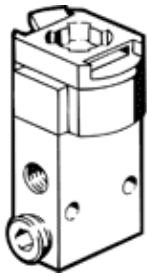


Front panel valve SVS-3-1/8

Part number: 10190

FESTO



Data sheet

Feature	Value
Valve function	3/2 closed, monostable
Type of actuation	mechanical
Standard nominal flow rate	120 l/min
Operating pressure MPa	0.35 ... 0.8 MPa
Working pressure	3.5 ... 8 bar
Design structure	Piston seat
Type of reset	mechanical spring
Sealing principle	soft
Assembly position	Any
Type of piloting	Piloted
Flow direction	non reversible
Note on forced dynamisation	Switching frequency at least once a week
Operating medium	Compressed air in accordance with ISO8573-1:2010 [-:::]
PWIS conformity	VDMA24364-B1/B2-L
Medium temperature	-10 ... 60 °C
Ambient temperature	-10 ... 60 °C
Actuating force	8 N
Mounting type	with through hole
Pneumatic connection, port 1	G1/8
Pneumatic connection, port 2	G1/8
Pneumatic connection, port 3	G1/8
Materials note	Conforms to RoHS
Material cover	POM
Material seals	NBR TPE-U(PU)
Material housing	Aluminum