

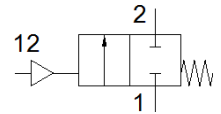
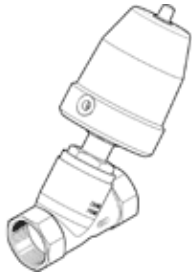
# Angle seat valve

## VZXF-L-M22C-M-B-N112-350-M1-V4V4T-80-8

Part number: 1002560

FESTO

Pneumatically actuated angle seat valve in stainless steel. Under seat version, safety position closed, NPT-thread, nominal width 1 1/2".



### Data sheet

| Feature                                      | Value  |
|--|--|
| Design structure                             | Poppet valve with piston actuator  |
| Type of actuation                            | pneumatic  |
| Sealing principle                            | soft   |
| Assembly position                            | Any  |
| Mounting type                                | Line installation  |
| Line connection                              | Threaded coupling 1 1/2 NPT to ANSI/ASME B 1.20.1  |
| Nominal size                                 | 35 mm  |
| Valve function                               | 2/2 closed, monostable   |
| Flow direction                               | non reversible   |
| Pressure of medium                           | 0 ... 0.8 MPa  |
| Medium pressure                              | 0 ... 8 bar  |
| Nominal pressure of process valve            | 40   |
| Exhaust-air function                         | not throttleable   |
| Type of reset                                | mechanical spring  |
| Type of piloting                             | With external control  |
| Pneumatic connection                         | Female thread G1/8   |
| Operating pressure MPa                       | 0.6 ... 1 MPa  |
| Working pressure                             | 6 ... 10 bar   |
| Operating pressure                           | 87 ... 145 psi   |
| Medium                                       | Vapour<br>Mineral oil-based hydraulic oil<br>Inert gases<br>Mineral oil<br>Water<br>Filtered compressed air, degree of filtration 200 µm<br>Neutral fluids |
| Flow direction                               | Below valve seat, for gaseous and liquid media   |
| Operating medium                             | Compressed air in accordance with ISO8573-1:2010 [7:4:4]   |
| Max. viscosity                               | 600 mm <sup>2</sup> /s   |
| Medium temperature                           | -40 ... 200 °C   |
| Ambient temperature                          | -10 ... 60 °C  |
| Flow rate Kv                                 | 28 m <sup>3</sup> /h   |
| Materials note                               | Conforms to RoHS   |
| PWIS conformity                              | VDMA24364 zone III   |
| Material process valve housing               | Stainless steel casting  |
| Material number, process valve housing       | 1.4408   |
| Material spindle seal                        | PTFE   |
| Material seat seal                           | PTFE   |
| Product weight                               | 4,300 g  |
| CE symbol (see declaration of conformity)    | according to EU printing device guideline  |
| UKCA marking (see declaration of conformity) | UK regulation for pressure equipment   |
| Corrosion resistance classification CRC      | 3 - High corrosion stress  |
| Material drive housing                       | High alloy steel, non-corrosive  |