

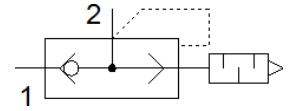
quick exhaust valve SEU-1/2-NPT

Part number: 9801

FESTO

With built-in silencer.

The exhaust noise level is measured at 6 bar to atmosphere at 1 m distance.



Data sheet

Feature	Value
Valve function	Quick exhaust
Pneumatic connection, port 1	1/2 NPT
Pneumatic connection, port 2	1/2 NPT
Mounting type	Threaded
Standard nominal flow rate, exhaust 0.6-0.5 MPa (6-5 bar, 87-72.5 psi)	4,020 l/min
Standard flow rate exhaust 0.6-0 MPa (6-0 bar, 87-0 psi)	6,500 l/min
Standard nominal flow rate pressurisation 0.6-0.5 MPa (6-5 bar, 87-72.5 psi)	4,560 l/min
Operating pressure	0.3 ... 10 bar
Ambient temperature	-20 ... 75 °C
Operating medium	Compressed air in accordance with ISO8573-1:2010 [7:-:]
Nominal size	15 mm
Note on operating and pilot medium	Lubricated operation possible (subsequently required for further operation)
PWIS conformity	VDMA24364-B1/B2-L
Medium temperature	-20 ... 75 °C
Sound pressure level	86 dB(A)
Materials note	Conforms to RoHS