

foot valve

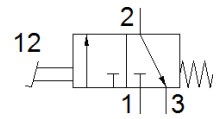
F-3-1/4-B

Part number: 8984

FESTO

Non-detenting.

This type is suitable for vacuum.



Data sheet

| Feature | Value |
|------------------------------|--|
| Valve function | 3/2 closed, monostable |
| Type of actuation | manual |
| Standard nominal flow rate | 600 l/min |
| Operating pressure | -0.95 ... 10 bar |
| Design structure | Poppet seat |
| Type of reset | mechanical spring |
| Nominal size | 7 mm |
| Assembly position | Any |
| Type of piloting | direct |
| Flow direction | non reversible |
| Operating medium | Compressed air in accordance with ISO8573-1:2010 [7:4:4] |
| PWIS conformity | VDMA24364-B1/B2-L |
| Ambient temperature | -10 ... 60 °C |
| Actuating force | 50 N |
| Product weight | 595 g |
| Mounting type | with through hole |
| Pneumatic connection, port 1 | G1/4 |
| Pneumatic connection, port 2 | G1/4 |
| Pneumatic connection, port 3 | G1/4 |
| Material seals | NBR |
| Material housing | Aluminium die cast |