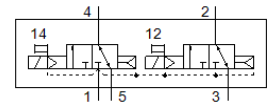
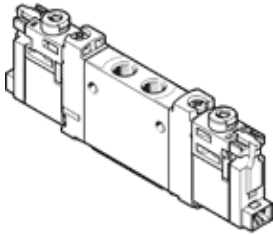


solenoid valve

VUVG-LK10-T32C-AT-M5-1H2L-F1A

Part number: 8173199

FESTO



Data sheet

Feature	Value
Valve function	2x3/2 closed, monostable
Type of actuation	electrical
Valve size	10 mm
Standard nominal flow rate	180 l/min
Operating pressure MPa	0.15 ... 0.7 MPa
Operating pressure	1.5 ... 7 bar
Design structure	Piston slide with sealing ring
Type of reset	Air spring
Authorisation	c UL us - Recognized (OL)
Certificate issuing department	UL MH19482
Protection class	IP40
Exhaust-air function	throttleable
Sealing principle	soft
Assembly position	Any
Manual override	detenting Pushing
Type of piloting	Piloted
Pilot air supply	Internal
Flow direction	non reversible
Overlap	Positive overlap
Signal status display	LED
Max. switching frequency	2 Hz
Switching time off	14 ms
Switching time on	12 ms
Duty cycle	100 %
Max. positive test pulse with logic 0	1,600 µs
Max. negative test pulse with logic 1	3,000 µs
Characteristic coil data	24 V DC: 0.8 W
Permissible voltage fluctuation	+/- 10 %
Operating medium	Compressed air in accordance with ISO8573-1:2010 [7:4:4]
Note on operating and pilot medium	Lubricated operation possible (subsequently required for further operation)
Vibration resistance	Transport application test with severity level 1 as per FN 942017-4 and EN 60068-2-6
Shock resistance	Shock test with severity level 1 in accordance with FN 942017-5 and EN 60068-2-27
Corrosion resistance classification CRC	0 - No corrosion stress
PWIS conformity	VDMA24364 zone III
RSBP classification to CD-0033	F1a
Cleanroom class	ISO class 6
Medium temperature	-5 ... 50 °C
Pilot medium	Compressed air in accordance with ISO8573-1:2010 [7:4:4]
Ambient temperature	-5 ... 50 °C
Product weight	55 g
Electrical connection	2-pin Connection pattern H, horizontal connection

Feature	Value
	Plug
Mounting type	on manifold rail with through hole Optional
Pneumatic connection, port 2	M5
Pneumatic connection, port 4	M5
Materials note	Conforms to RoHS
Material seals	HNBR NBR
Material housing	Wrought Aluminium alloy