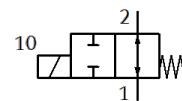
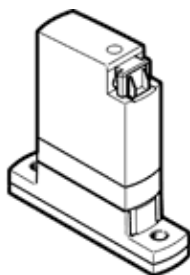


media separated solenoid valve

VYKA-F7-M22U-12-PE-5YQ7

Part number: 8170091

FESTO



Data sheet

Feature	Value
Design structure	Rocker valve with diaphragm seal
Sealing principle	soft
Materials in contact with media	EPDM PEEK
Food-safe	See Supplementary material information
Valve function	2/2 open, monostable
Nominal size	1.2 mm
Flow direction	reversible with restrictions
Type of actuation	electrical
Type of piloting	direct
Type of reset	mechanical spring
Manual override	None
Assembly position	Any
Mounting type	With through-hole for M2 screw
Electrical connection 1, connection type	Plug socket
Electrical connection 1, connection technology	Connection pattern Q7
Electrical connection 1, number of pins/wires	2
Size	7
Grid dimension	7.5 mm
Fluid connection	Flange
Medium	Fluid media Gaseous media
Note on the medium	Observe resistance of materials that come into contact with media Maximum particle size: 5 µm
Internal volume	18 µl fluid chamber valve 24 µl valve with fluid connections
Temperature of liquid media	0 ... 50 °C
Temperature of gaseous media	0 ... 50 °C
Ambient temperature	0 ... 50 °C
Storage temperature	-20 ... 70 °C
Pressure of medium	-0.05 ... 0.2 MPa
Medium pressure	-0.5 ... 2 bar
Pressure of medium psi	-7.25 ... 29 psi
Note on pressure of medium	IN:-0,25-2/-0,025-0,2/.. OUT:-0,5-1/-0,05-0,1/..
Differential pressure (MPa)	0.2 MPa
Differential pressure	2 bar
Differential pressure (psi)	29 psi
Burst pressure	2.3 MPa
Bursting pressure	23 bar
Burst pressure	333.5 psi
Operating voltage range DC	12 ... 26 V
Note on operating voltage range DC	With electrical E-box VAVE-K1-...
Permissible voltage fluctuation	+/- 10 %
Electrical power consumption	3.5 W

Feature	Value
Information on power consumption	Low-current phase 0.3 W, high-current phase 3.5 W for 60 ms, in combination with VAVE-K1-...
Characteristic coil data	12 - 26 V DC: low-current phase 0.06 W, high-current phase 2.2 W
Insulation class	B
Duty cycle	100% with holding current reduction Observe notes on operating the solenoid valves
Max. switching frequency	6 Hz
Note on switching frequency	Dependent on the ambient temperature and installation state For 100% duty cycle, dependent on the ambient temperature and installation state
Response time "off" for liquid media	5 ms
Switching time off gaseous media	5 ms
Standard nominal flow rate	10 l/min
Information on standard nominal flow rate	In case of a pressure drop of 1 -> 0 bar (gaseous media)
Flow rate Kv	0.018 m ³ /h
Flow rate Kv (l/min)	0.3 l/min
Information on flow rate Kv	For water as medium Pressure difference 1 bar
Water flow rate at max. operating pressure	0,024 m ³ /h 0,40 l/min
Material housing	PA-reinforced PEEK PPA amplified
Material membrane	EPDM
Material seals	EPDM
Materials note	Conforms to RoHS
PWIS conformity	VDMA24364 zone III
Product weight	10.9 g
Protection class	IP40
Note on degree of protection	in assembled condition
Instructions for use	For indoor use only
Corrosion resistance classification CRC	0 - No corrosion stress