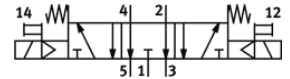
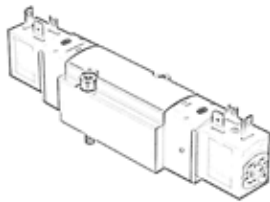


solenoid valve

VSVA-BK-P53E-D-D1-1B2

Part number: 8166595

FESTO



Data sheet

Feature	Value
Valve function	5/3 exhausted
Type of actuation	electrical
Width	38 mm
Valve size	42 mm
Standard nominal flow rate	1,200 l/min
Operating pressure MPa	0.3 ... 0.8 MPa
Operating pressure	3 ... 8 bar
Design structure	Piston slide with sealing ring
Type of reset	mechanical spring
Protection class	IP65 with plug socket to IEC 60529
Nominal size	6.3 mm
Grid dimension	43 mm
Exhaust-air function	throttleable
Sealing principle	soft
Assembly position	Any
Conforms to standard	ISO 5599-1
Manual override	detenting Pushing
ISO code	157
Type of piloting	Piloted
Pilot air supply	Internal
Flow direction	non reversible
Overlap	Underlap
Signal status display	with accessories
b value	0.26
C value	5.63 l/sbar
Flow rate of valve	1,289 l/min
Flow rate of valve on individual sub-base	1,289 l/min
Flow rate of pneumatically linked valve	1,283 l/min
Switching time off	37.4 ms
Switching time on	12.4 ms
Switching time reversal	18.9 ms
Duty cycle	100 %
Max. positive test pulse with logic 0	2,500 µs
Max. negative test pulse with logic 1	1,100 µs
Nominal operating voltage DC	24 V
Characteristic coil data	24 V DC: 3.3 W
Permissible voltage fluctuation	+/- 10 %
Operating medium	Compressed air in accordance with ISO8573-1:2010 [7:4:4]
Note on operating and pilot medium	Lubricated operation possible (subsequently required for further operation)
Vibration resistance	Transport application test at severity level 2 in accordance with FN 942017-4 and EN 60068-2-6

Feature	Value
Shock resistance	Shock test with severity level 2 in accordance with FN 942017-5 and EN 60068-2-27
Corrosion resistance classification CRC	1 - Low corrosion stress
PWIS conformity	VDMA24364 zone III
Medium temperature	-5 ... 50 °C
Pilot medium	Compressed air in accordance with ISO8573-1:2010 [7:4:4]
Ambient temperature	-5 ... 50 °C
Max. tightening torque, valve mounting	5 Nm
Product weight	402 g
Electrical connection	Plug pattern type B to EN 175301-803 To industry standard (11 mm)
Mounting type	On sub-base
Scavenging orifice connection	Non-ducted
Pneumatic connection, port 1	Connection plate size 1 as per ISO 5599-1
Pneumatic connection, port 2	Connection plate size 1 as per ISO 5599-1
Pneumatic connection, port 3	Connection plate size 1 as per ISO 5599-1
Pneumatic connection, port 4	Connection plate size 1 as per ISO 5599-1
Pneumatic connection, port 5	Connection plate size 1 as per ISO 5599-1
Materials note	Conforms to RoHS
Material seals	HNBR NBR
Material housing	Wrought Aluminium alloy
Material Piston slide	Wrought Aluminium alloy
Material screws	Galvanised steel