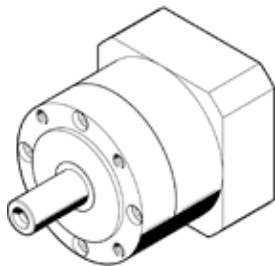


gear unit EMGA-120-P-G12-SAS-140

Part number: 8141760

FESTO



Data sheet

| Feature | Value |
|-------------------------------------|-------------------------|
| Gear unit flange size | 120 mm |
| Motor flange size | 140 mm |
| Torsional backlash | 0.15 deg |
| Type of gear unit | Planetary gear unit |
| Gear unit ratio | 12:1 |
| Max. input speed | 6,500 1/min |
| Operating temperature of gear unit | -25 ... 90 °C |
| PWIS conformity | VDMA24364-B2-L |
| Protection class | IP54 |
| Continuous output torque | 260 Nm |
| Mass moment of inertia of gear unit | 2.224 kgcm ² |
| Max. output torque | 520 Nm |
| Max. efficiency | 96 % |
| Torsional resistance | 22 Nm/arcmin |
| Product weight | 9,000 g |
| Gear unit interface, output shaft | 120G |
| Gear unit interface, drive shaft | 140A |
| Materials note | Conforms to RoHS |