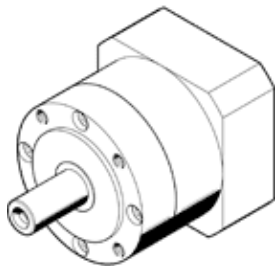


gear unit EMGA-120-P-G8-SAS-140

Part number: 8141759

FESTO



Data sheet

Feature	Value
Gear unit flange size	120 mm
Motor flange size	140 mm
Torsional backlash	0.12 deg
Type of gear unit	Planetary gear unit
Gear unit ratio	8:1
Max. input speed	6,500 1/min
Operating temperature of gear unit	-25 ... 90 °C
PWIS conformity	VDMA24364-B2-L
Protection class	IP54
Continuous output torque	120 Nm
Mass moment of inertia of gear unit	1.431 kgcm ²
Max. output torque	380 Nm
Max. efficiency	97 %
Torsional resistance	18 Nm/arcmin
Product weight	7,000 g
Gear unit interface, output shaft	120G
Gear unit interface, drive shaft	140A
Materials note	Conforms to RoHS