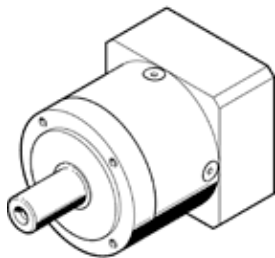


gear unit EMGA-80-P-G20-EAS-80

Part number: 8141743

FESTO



Data sheet

Feature	Value
Gear unit flange size	80 mm
Motor flange size	80 mm
Torsional backlash	0.15 deg
Type of gear unit	Planetary gear unit
Gear unit ratio	20:1
Max. input speed	7,000 1/min
Operating temperature of gear unit	-25 ... 90 °C
PWIS conformity	VDMA24364-B2-L
Protection class	IP54
Continuous output torque	120 Nm
Mass moment of inertia of gear unit	0.406 kgcm ²
Max. output torque	240 Nm
Max. efficiency	96 %
Torsional resistance	10.4 Nm/arcmin
Product weight	2,500 g
Gear unit interface, output shaft	80G
Gear unit interface, drive shaft	80P
Materials note	Conforms to RoHS