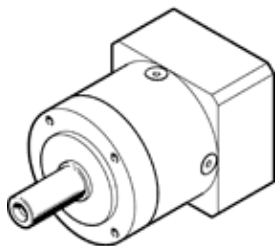


gear unit EMGA-40-P-G12-EAS-40

Part number: 8141730

FESTO



Data sheet

Feature	Value
Gear unit flange size	40 mm
Motor flange size	40 mm
Torsional backlash	0.31 deg
Type of gear unit	Planetary gear unit
Gear unit ratio	12:1
Max. input speed	18,000 1/min
Operating temperature of gear unit	-25 ... 90 °C
PWIS conformity	VDMA24364-B2-L
Protection class	IP54
Continuous output torque	20 Nm
Mass moment of inertia of gear unit	0.025 kgcm ²
Max. output torque	32 Nm
Max. efficiency	96 %
Torsional resistance	1 Nm/arcmin
Product weight	450 g
Gear unit interface, output shaft	40G
Gear unit interface, drive shaft	40P
Materials note	Conforms to RoHS