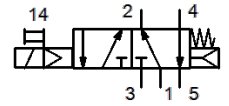
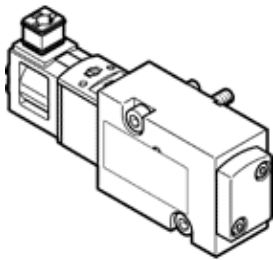


solenoid valve

VSNC-FKA-M52-RD-G18-1C1-S

Part number: 8128473

FESTO



Data sheet

| Feature | Value |
|--|---|
| Valve function | 5/2 monostable Connections swapped |
| Type of actuation | electrical |
| Width | 25.5 mm |
| Standard nominal flow rate | 400 l/min |
| Operating pressure MPa | 0.25 ... 0.8 MPa |
| Operating pressure | 2.5 ... 8 bar |
| Design structure | Piston slide with sealing ring |
| Type of reset | mechanical spring Air spring |
| Protection class | IP65 |
| Exhaust-air function | throttleable |
| Sealing principle | soft |
| Assembly position | Any |
| Conforms to standard | VDI/VDE 3845 (NAMUR) |
| Manual override | detenting |
| Type of piloting | Piloted |
| Pilot air supply | Internal |
| Flow direction | non reversible |
| Overlap | Positive overlap |
| b value | 0.3 |
| C value | 2.1 l/sbar |
| Standard nominal flow rate, exhaust air return 4→3 | 100 l/min |
| Switching time off | ≤ 50 ms |
| Switching time on | ≤ 50 ms |
| Duty cycle | 100 % |
| Characteristic coil data | 24 V DC: 2.4 W |
| Operating medium | Compressed air in accordance with ISO8573-1:2010 [7:4:4] |
| Note on operating and pilot medium | Lubricated operation possible (subsequently required for further operation) |
| Corrosion resistance classification CRC | 1 - Low corrosion stress |
| PWIS conformity | VDMA24364 zone III |
| Storage temperature | -20 ... 60 °C |
| Medium temperature | -20 ... 50 °C |
| Ambient temperature | -20 ... 50 °C |
| Product weight | 220 g |
| Electrical connection | Plug pattern type C to EN 175301-803 |
| Mounting type | with through hole |
| Scavenging orifice connection | Non-ducted |
| Pneumatic connection, port 1 | G1/8 |
| Pneumatic connection, port 2 | NAMUR port pattern |
| Pneumatic connection, port 3 | G1/8 |
| Pneumatic connection, port 4 | NAMUR port pattern |
| Pneumatic connection, port 5 | G1/8 |
| Materials note | Conforms to RoHS |
| Material cover | PA-reinforced |

| Feature | Value |
|--------------------------|---------------------------------|
| Material seals | NBR |
| Material housing | Wrought Aluminium alloy |
| Manual override material | PA-reinforced |
| Material piston | Wrought Aluminium alloy |
| Material screws | High alloy steel, non-corrosive |