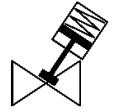


angle seat valve

VZXA-A-TS6-20-M6-B1T-16-K-75-20-PR-PM

Part number: 8111584

FESTO



Data sheet

Feature	Value
Design structure	Poppet valve with piston actuator
Type of actuation	pneumatic
Assembly position	Any
Mounting type	Line installation
Line connection	G $\frac{3}{4}$ threaded collar to DIN ISO 228
Valve function	2/2
Flow direction	non reversible
Pressure of medium	0 ... 1.6 MPa
Medium pressure	0 ... 16 bar
Type of reset	mechanical spring
Type of piloting	With external control
Pneumatic connection	Female thread G1/8
Operating pressure MPa	0.5 ... 0.7 MPa
Operating pressure	5 ... 7 bar 72.5 ... 101.5 psi
Medium	Vapour Inert gases Filtered compressed air, degree of filtration 200 μ m
Flow direction	Above valve seat, for gaseous media
Control of the medium	On/off operation
Operating medium	Compressed air in accordance with ISO8573-1:2010 [7:4:4]
Max. viscosity	600 mm ² /s
Medium temperature	-10 ... 60 °C
Ambient temperature	0 ... 60 °C
Flow rate Kv	12.7 m ³ /h
Outdoor use	C1 - weather protected locations of use
Materials note	Conforms to RoHS
PWIS conformity	VDMA24364 zone III
Material process valve housing	Brass
Material number, process valve housing	CW724R
Material seals	FPM
Material spindle seal	PTFE
Material seat seal	PTFE
Product weight	2,321 g
Actuator size	75 mm
Stroke	20 mm
Control function	Closed via reduced spring force, NC
Position detection	With mechanical indicator
Material drive housing	PA-reinforced
Storage temperature	-10 ... 60 °C
Protection class	IP65 IP67
Material piston rod	High alloy steel, non-corrosive
Material cover	PA-reinforced