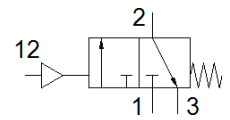
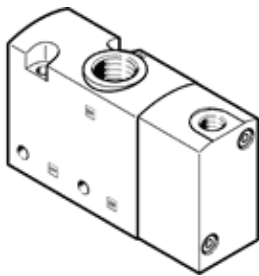


pneumatic valve

VUWS-LT30-M32C-M-G38

Part number: 8096574

FESTO



Data sheet

Feature	Value
Valve function	3/2 closed, monostable
Type of actuation	pneumatic
Valve size	31 mm
Standard nominal flow rate	1,600 l/min
Operating pressure MPa	0.1 ... 1 MPa
Operating pressure	1 ... 10 bar
Design structure	Poppet seat
Type of reset	mechanical spring
Authorisation	c UL us - Recognized (OL)
Nominal size	7.9 mm
Exhaust-air function	throttleable
Sealing principle	soft
Assembly position	Any
Manual override	None
Type of piloting	direct
Pilot air supply	Internal
Flow direction	non reversible
Overlap	Underlap
Pilot pressure MPa	0.25 ... 1 MPa
Pilot pressure	2.5 ... 10 bar
Switching time off	37 ms
Switching time on	11 ms
Operating medium	Compressed air in accordance with ISO8573-1:2010 [7:4:4]
Note on operating and pilot medium	Lubricated operation possible (subsequently required for further operation)
Corrosion resistance classification CRC	2 - Moderate corrosion stress
PWIS conformity	VDMA24364-B1/B2-L
Medium temperature	-10 ... 60 °C
Pilot medium	Compressed air in accordance with ISO8573-1:2010 [7:4:4]
Ambient temperature	-10 ... 60 °C
Product weight	345 g
Mounting type	on manifold rail with through hole Optional
Scavenging orifice connection	Non-ducted
Pilot air port 12	1/8 NPT
Pneumatic connection, port 1	G3/8
Pneumatic connection, port 2	G3/8
Pneumatic connection, port 3	G3/8
Materials note	Conforms to RoHS
Material seals	HNBR NBR TPE-U(PU)
Material housing	Die-cast aluminium, painted
Material Piston slide	POM
Material screws	Steel, nickel-plated