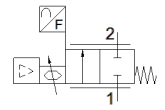
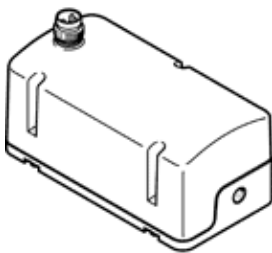


Proportional flow control valve

VEMD-L-6-14-20-D21-M5-5-R1-V4

Part number: 8086473

FESTO



Data sheet

Feature	Value
Protection class	IP40
Note on degree of protection	IP51 with horizontal installation
Flow rate control range	0 ... 20 l/min
Note on the flow rate control range	The specified flow control range only applies at room temperature. Above room temperature, a reduction in the max. adjustable flow rate may occur.
Flow direction	non reversible
Operating pressure MPa	0 ... 0.25 MPa
Operating pressure	0 ... 2.5 bar
Overload pressure	0.6 MPa 6 bar
Overload pressure (psi)	87 psi
Burst pressure	1 MPa
Bursting pressure	10 bar
Burst pressure	145 psi
Accuracy of flow rate	± (4% o.m.v. + 1,25% FS)
Repetition accuracy in ± %FS	1 %FS
Hysteresis FS	2.5 %FS
Linearity error, FS	2 %
Temperature coefficient	0.1 %/K
Valve function	2-way proportional flow control valve
Nominal size	1.4 mm
Pneumatic connection, port 1	Female thread M5
Pneumatic connection, port 2	Female thread M5
Medium	Compressed air to ISO 8573-1:2010 [5:4:1] Inert gases Oxygen (oxygen applications to IEC 60601-1 only on request) Nitrogen
Note on the medium	Lubricated operation not possible
Special characteristics	Oxygen-compatible to DIN EN 1797
Ambient Conditions	Not suitable for use in an environment enriched with oxygen to IEC 60601-1
Duty cycle	100 %
Medium temperature	5 ... 40 °C
Ambient temperature	0 ... 50 °C
Storage temperature	-20 ... 70 °C
Nominal operating voltage DC	12 V
Operating voltage range DC	11.1 ... 13.2 V
Max. current consumption	65 mA
Max. electrical power consumption	1 W
Electrical connection	4-pin M8x1, A-coded to EN 61076-2-104 Plug
Setpoint value	0,2 - 10 V
Signal range, analogue input	0,2 - 10 V
Signal range, analogue output	0,2 - 10 V
Polarity protected	For operating voltage connections
Product weight	92 g

Feature	Value
Material seals	EPDM NBR
Material cover	PA-reinforced
Materials note	Conforms to RoHS
Dimensions W x L x H	37 mm x 70 mm x 31 mm
Mounting type	Direct mounting via threads
Assembly position	Any
Authorisation	RCM Mark
Conforms to standard	EN 61000-6-2 (EMC) EN 61000-6-3 (EMC)
KC mark	KC-EMV
CE mark (see declaration of conformity)	to EU directive for EMC in accordance with EU RoHS directive
UKCA marking (see declaration of conformity)	To UK instructions for EMC To UK RoHS instructions
PWIS conformity	VDMA24364 zone III