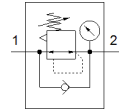
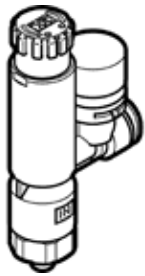


Pressure regulator VRPA-LM-N18-T516

Part number: 8086015

FESTO



Data sheet

Feature	Value
Controller function	Output pressure constant with secondary exhaust with return flow
Pneumatic connection, port 1	1/8 NPT
Pneumatic connection, port 2	QS-5/16
Mounting type	Threaded
Standard nominal flow rate	130 l/min
Ambient temperature	0 ... 60 °C
Material housing	PBT
Operating medium	Compressed air in accordance with ISO8573-1:2010 [7:4:4]
Assembly position	Any
Type of actuation	manual
Type of seal on screw-in stud	coating
Adjusting element	Rotary knob with lock
Ability to swivel	360° / no continuous swivelling permissible
Pressure gauge	with pressure gauge
Pressure regulation range MPa	0.1 ... 0.8 MPa
Pressure regulation range	1 ... 8 bar
Pressure regulation range psi	14.5 ... 116 psi
Note on operating and pilot medium	Lubricated operation possible (subsequently required for further operation)
PWIS conformity	VDMA24364-B2-L
Cleanroom class	ISO class 4
Product weight	32 g
Material of threaded plug	Nickel-plated brass
Materials note	Conforms to RoHS
Material of threaded seal	PTFE
Material static seals	NBR