

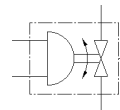
# ball valve actuator unit

## VZBM-A-1/2"-RP-25-F-3L-B2-PA10

Part number: 8070252

FESTO

Brass, with double-acting actuator DFPD 3/2-way, nominal width 1/2", PN25, thread EN 10226-1.



### Data sheet

Feature	Value
Design structure	3-way ball valve Swivel drive
Type of actuation	pneumatic
Assembly position	Any
Mounting type	Line installation
Process valve connection	Rp1/2
Switching position indicator	Slot direction = flow direction
Nominal diameter DN	15
Operating pressure	5.5 ... 8 bar
Nominal pressure of process valve	25
Medium	Compressed air in accordance with ISO8573-1:2010 [-:::] Inert gases Water (no water vapour) Neutral fluids
Operating medium	Compressed air in accordance with ISO8573-1:2010 [7:4:4]
Note on operating and pilot medium	Pressure dew point 10°C below ambient temperature/temperature of medium Lubricated operation possible (subsequently required for further operation)
Medium temperature	-20 ... 130 °C
Ambient temperature	-20 ... 80 °C
Flow rate Kv type L	17 m3/h
Materials note	Conforms to RoHS
PWIS conformity	VDMA24364 zone III
Material housing	Nickel-plated brass
Material number for housing	CW617N
Material seals	HNBR PTFE
Material ball	Brass, chrome-plated
Material number for ball	CW614N
Material shaft	Brass
Material number for shaft	CW614N
Product weight	1,441 g
Corrosion resistance classification CRC	1 - Low corrosion stress