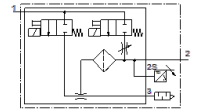
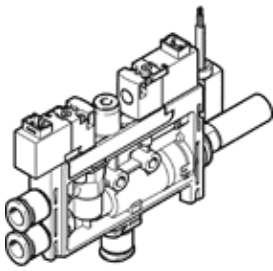


# vacuum generator

## OVEL-7-H-15-PQ-VQ4-UA-C-A-B2V-H3

Part number: 8069568

FESTO



### Data sheet

Feature	Value
Nominal size, Laval nozzle	0.7 mm
Grid dimension	15 mm
Design, silencer	open
Assembly position	Any
Ejector characteristic	High vacuum Standard
Grade of filtration	40 µm
Manual override	Pushing
Integrated function	Ejector pulse, electrical Flow control valve Pressure transmitter Electrical on-off valve Filter Open silencer
Design structure	T-shaped
Valve function	closed
Measurement method	Piezoresistive pressure sensor
Operating pressure for max. suction rate (MPa)	0.4 MPa
Operating pressure for max. suction rate	4 bar
Operating pressure for max. suction rate (psi)	58 psi
Operating pressure MPa	0.2 ... 0.7 MPa
Operating pressure	2 ... 7 bar 29 ... 101.5 psi
Operating pressure for max. vacuum (MPa)	0.45 MPa
Operating pressure for max. vacuum	4.5 bar
Operating pressure for max. vacuum (psi)	65.25 psi
Max. vacuum	92 %
Nominal operating pressure	0.4 MPa 4 bar
Nominal operating pressure (psi)	58 psi
Max. suction rate with respect to atmosphere	17 l/min
Air supply time at nominal operating pressure with ejector pulse	1.2 s
Analogue output	0 - 10 V
Operating voltage range DC	21.6 ... 26.4 V
Duty cycle	100 %
Characteristic coil data	24 V DC: 1 W
Authorisation	c UL us - Listed (OL)
KC mark	KC-EMV
CE mark (see declaration of conformity)	to EU directive for EMC
UKCA marking (see declaration of conformity)	To UK instructions for EMC
Operating medium	Compressed air in accordance with ISO8573-1:2010 [7:4:4]
Note on operating and pilot medium	Lubricated operation not possible
Corrosion resistance classification CRC	2 - Moderate corrosion stress
PWIS conformity	VDMA24364-B1/B2-L
Medium temperature	0 ... 50 °C
Noise level at nominal operating pressure	61 dB(A)

Feature	Value
Protection class	IP40
Ambient temperature	0 ... 50 °C
Product weight	88 g
Operating voltage range, DC sensor	18 ... 30 V
Pressure measurement range	-0.1 ... 0.1 MPa
Pressure measuring range	-1 ... 1 bar
Pressure measurement range	-14.5 ... 14.5 psi
Electrical connection, input, function	Ejector pulse Vacuum generation
Electrical connection, input, connection type	2x plug
Electrical connection, input, connection technology	Connection pattern H
Electrical connection, input, number of pins/wires	2
Electrical connection, input, type of mounting	Snap-in locking
Electrical connection, output, function	Sensor
Electrical connection, output, connection type	Cable
Electrical connection, output, connection technology	Open end
Electrical connection, output, number of pins/wires	3
Cable attribute	Suitable for energy chains
Cable diameter	2.9 mm
Cable diameter tolerance	± 0,1 mm
Cable length	2.5 m
Nominal conductor cross-section	0.14 mm <sup>2</sup>
Mounting type	with through hole
Pneumatic connection, port 1	For tubing outside diameter 4 mm
Pneumatic connection, port 3	Open silencer
Vacuum connection	For tubing outside diameter 4 mm
Cable sheath colour	Grey
Material of connecting thread	POM
Materials note	Conforms to RoHS
Material seals	NBR
Material receiver nozzle	POM
Material filter	POM
Material housing	PA-reinforced
Material cable sheath	PVC
Material adjusting screw	Steel
Material silencer	PA-reinforced PE
Material screws	Steel
Material transmitter nozzle	Wrought Aluminium alloy