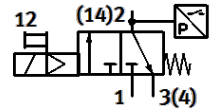
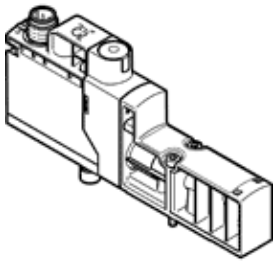


solenoid valve

VSVA-BT-M32CS1-MYE-A2-1T1L-PZ

Part number: 8066568

FESTO



Data sheet

| Feature | Value |
|---|--|
| Valve function | 3/2 closed, monostable |
| Type of actuation | electrical |
| Width | 18 mm |
| Standard nominal flow rate | 125 l/min |
| Standard nominal flow rate venting | 125 l/min |
| Operating pressure MPa | 0.3 ... 1 MPa |
| Operating pressure | 3 ... 10 bar |
| Design structure | Poppet seat |
| Type of reset | mechanical spring Air spring |
| Protection class | IP65 |
| Sealing principle | soft |
| Assembly position | Any |
| Manual override | detenting self-resetting via electrical control signal |
| Type of piloting | Piloted |
| Pilot air supply | Internal |
| Flow direction | non reversible |
| Overlap | Underlap |
| Signal status display | Yellow LED, valve control Green LED, pressure switch, exhausted status |
| Switching position sensing | Via pressure switch, exhausted status |
| Duty cycle | 100 % |
| Max. positive test pulse with logic 0 | 2,000 µs |
| Max. negative test pulse with logic 1 | 1,200 µs |
| Nominal operating voltage DC | 24 V |
| Characteristic coil data | 24 V DC: 1.6 W |
| Permissible voltage fluctuation | +/- 10 % |
| Operating medium | Compressed air in accordance with ISO8573-1:2010 [7:4:4] |
| Note on operating and pilot medium | Lubricated operation not possible |
| Vibration resistance | Transport application test at severity level 2 in accordance with FN 942017-4 and EN 60068-2-6 |
| Shock resistance | Shock test with severity level 2 in accordance with FN 942017-5 and EN 60068-2-27 |
| Corrosion resistance classification CRC | 0 - No corrosion stress |
| PWIS conformity | VDMA24364-B1/B2-L |
| Medium temperature | -5 ... 50 °C |
| Pilot medium | Compressed air in accordance with ISO8573-1:2010 [7:4:4] |
| Ambient temperature | -5 ... 50 °C |
| MTTF, subcomponent | 443 years, pressure switch |
| Product weight | 110 g |
| Electrical connection | Plug-in |
| Mounting type | On sub-base |
| Pneumatic connection, port 2 | G1/8 |
| Pneumatic connection, port 4 | G1/8 |
| Materials note | Conforms to RoHS |

| Feature | Value |
|----------------------------|-------------------------|
| Material seals | HNBR NBR |
| Material housing | PA-reinforced |
| Material screws | Galvanised steel |
| Switching element function | Normally closed contact |