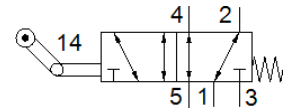
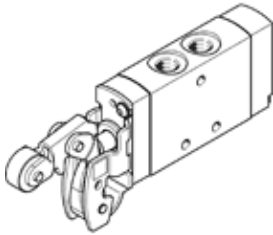


roller lever valve VMEF-K-M52-M-N14

Part number: 8047106

FESTO



Data sheet

Feature	Value
Valve function	5/2 monostable
Type of actuation	mechanical
Width	20 mm
Standard nominal flow rate	1,200 l/min
Operating pressure MPa	-0.095 ... 1 MPa
Operating pressure	-0.95 ... 10 bar
Design structure	Toggle lever Piston slide
Type of reset	mechanical spring
Max. stroke limit (hard)	11.8 mm
Nominal size	7 mm
Instructions for use	Risk of pinching
Sealing principle	soft
Assembly position	Any
Type of piloting	direct
Flow direction	reversible
Overlap	Positive overlap
Max. actuating speed for side actuation	0.7 m/s
Max. switching frequency	3 Hz
Cam angle	30 deg
Operating medium	Compressed air in accordance with ISO8573-1:2010 [7:-:-]
Note on operating and pilot medium	Lubricated operation possible (subsequently required for further operation)
Corrosion resistance classification CRC	1 - Low corrosion stress
PWIS conformity	VDMA24364-B1/B2-L
Medium temperature	-10 ... 60 °C
Ambient temperature	-10 ... 60 °C
Note on ambient temperature	Influence of heat on wear
Actuating force	23.5 N
Product weight	286 g
Mounting type	with through hole
Pneumatic connection, port 1	1/4 NPT
Pneumatic connection, port 2	1/4 NPT
Pneumatic connection, port 3	1/4 NPT
Pneumatic connection, port 4	1/4 NPT
Pneumatic connection, port 5	1/4 NPT
Materials note	Conforms to RoHS
Material mounting adaptor	steel, galvanized
Material cover	PA-reinforced
Material seals	NBR
Material housing	Anodised wrought aluminium alloy