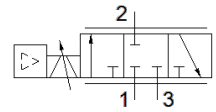
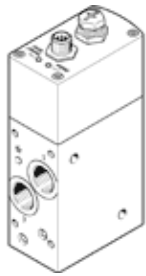


# Proportional flow control valve VPCF-6-L-8-G38-10-A4-E-EX2

Part number: 8041715

FESTO



## Data sheet

Feature	Value
Valve function	3-way proportional flow control valve
Design structure	Piston slide With built-in pressure sensors
Type of piloting	direct
Type of actuation	electrical
Type of reset	Magnetic spring
Flow direction	non reversible
Assembly position	Any
Sealing principle	Hard
Nominal size	6 mm
Short circuit strength	Yes
Type of display	LED
Flow rate range	0 ... 1,500 l/min
Operating pressure MPa	0.1 ... 1 MPa
Operating pressure	1 ... 10 bar
Flow rate control range	30 ... 1,500 l/min
Note on the flow rate control range	Regulation takes place as of 30 l/min; below this reference value the flow control valve switches to the exhaust port  The accuracy specifications provided are based on a flow rate control range of 75-1500 l/min
Repetition accuracy in ± %FS	0.5 %FS
Absolute accuracy in ± %FS at room temperature	3 %FS
Hysteresis FS	0.8 %FS
Ambient temperature	0 ... 50 °C
Medium temperature	15 ... 35 °C
Operating medium	Compressed air in accordance with ISO8573-1:2010 [6:4:4]
Note on operating and pilot medium	Lubricated operation not possible Maximum particle size: 5 µm
Protection class	IP65
Note on degree of protection	in assembled condition
Authorisation	RCM Mark
CE mark (see declaration of conformity)	to EU directive for EMC to EU directive explosion protection (ATEX) in accordance with EU RoHS directive
UKCA marking (see declaration of conformity)	To UK instructions for EMC To UK EX instructions To UK RoHS instructions
ATEX category Gas	II 3G
ATEX category Dust	II 3D
Explosion ignition protection type Gas	Ex nA IIC T5 X Gc
Explosion ignition protection type Dust	Ex tc IIIC T60°C X Dc
Explosion-proof ambient temperature	0°C ≤ Ta ≤ +50°C
PWIS conformity	VDMA24364-B1/B2-L
Materials note	Conforms to RoHS
Vibration resistance	Transport application test at severity level 2 in accordance with FN 942017-4 and EN 60068-2-6

<b>Feature</b>	<b>Value</b>
Shock resistance	Shock test with severity level 2 in accordance with FN 942017-5 and EN 60068-2-27
Corrosion resistance classification CRC	1 - Low corrosion stress
Nominal operating voltage DC	24 V
Operating voltage range DC	20.4 ... 30 V
Residual ripple	5 %
Max. current consumption	1.2 A
Current consumption with load-free outputs	150 mA
Switch output	PNP
Switching input	PNP
Current-carrying capacity per output	100 mA
Polarity protected	for operating voltage
Duty cycle	100 %
Max. electrical power consumption	36 W
Signal range, analogue output	4 - 20 mA
Signal range, analogue input	4 - 20 mA
Diagnosis function	Display via LED
Electrical connection	8-pin A-coded M12x1 Plug
Mounting type	Direct mounting via through-holes Direct mounting via threads
Pneumatic connection, port 1	G3/8
Pneumatic connection, port 2	G3/8
Pneumatic connection, port 3	G3/8
Product weight	856 g
Material housing	Anodised wrought aluminium alloy
Material seals	FPM HNBR