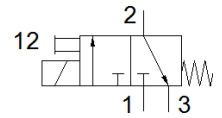
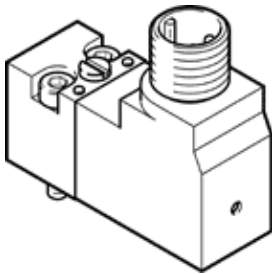


# solenoid valve

## VSCS-B-M32-MH-WA-1R3-8

Part number: 8040569

FESTO



### Data sheet

| Feature                                 | Value  |
|---|--|
| Valve function                          | 3/2 closed, monostable   |
| Type of actuation                       | electrical   |
| Width                                   | 15 mm  |
| Standard nominal flow rate              | 13.5 l/min   |
| Operating pressure MPa                  | 0.15 ... 0.8 MPa   |
| Operating pressure                      | 1.5 ... 8 bar<br>21.75 ... 116 psi   |
| Type of reset                           | mechanical spring  |
| Protection class                        | IP65   |
| Sealing principle                       | soft   |
| Assembly position                       | Any  |
| Conforms to standard                    | ISO 15218  |
| Manual override                         | Pushing  |
| Type of piloting                        | direct   |
| Flow direction                          | non reversible   |
| Overlap                                 | Underlap   |
| Note on forced dynamisation             | Switching frequency at least once a week   |
| Switching time off                      | 6 ms   |
| Switching time on                       | 8 ms   |
| Duty cycle                              | 100 %  |
| Characteristic coil data                | 24 V DC: 1.3 W   |
| Permissible voltage fluctuation         | +/- 10 %   |
| Operating medium                        | Compressed air in accordance with ISO8573-1:2010 [7:4:4]                             |
| Note on operating and pilot medium      | Lubricated operation possible (subsequently required for further operation)          |
| Vibration resistance                    | Transport application test with severity level 1 as per FN 942017-4 and EN 60068-2-6 |
| Shock resistance                        | Shock test with severity level 1 in accordance with FN 942017-5 and EN 60068-2-27    |
| Corrosion resistance classification CRC | 2 - Moderate corrosion stress  |
| PWIS conformity                         | VDMA24364-C1-L   |
| Medium temperature                      | -5 ... 50 °C   |
| Ambient temperature                     | -5 ... 50 °C   |
| Electrical connection                   | M12x1<br>as per IEC 61076-2-101  |
| Pneumatic connection, port 1            | Sub-base   |
| Pneumatic connection, port 2            | Sub-base   |
| Pneumatic connection, port 3            | Sub-base   |
| Materials note                          | Conforms to RoHS   |
| Material seals                          | NBR  |