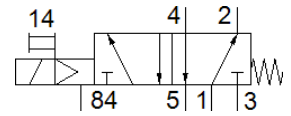
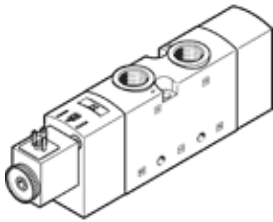


solenoid valve

VUVS-LT25-M52-MD-G14-F8-1C1

Part number: 8035183

FESTO



Data sheet

Feature	Value
Valve function	5/2 monostable
Type of actuation	electrical
Valve size	26.5 mm
Standard nominal flow rate	1,000 l/min
Operating pressure MPa	0.25 ... 1 MPa
Operating pressure	2.5 ... 10 bar
Design structure	Poppet seat
Type of reset	mechanical spring
Authorisation	c UL us - Recognized (OL)
Protection class	IP65 with plug socket to IEC 60529
Nominal size	6.6 mm
Exhaust-air function	throttleable
Sealing principle	soft
Assembly position	Any
Manual override	detenting Pushing
Type of piloting	Piloted
Pilot air supply	Internal
Flow direction	non reversible
Overlap	Underlap
b value	0.3
C value	4.5 l/sbar
Switching time off	24 ms
Switching time on	14 ms
Duty cycle	100 %
Max. positive test pulse with logic 0	2,000 µs
Max. negative test pulse with logic 1	3,600 µs
Characteristic coil data	24 V DC: 3.3 W
Permissible voltage fluctuation	+/- 10 %
Operating medium	Compressed air in accordance with ISO8573-1:2010 [7:4:4]
Note on operating and pilot medium	Lubricated operation possible (subsequently required for further operation)
Vibration resistance	Transport application test at severity level 2 in accordance with FN 942017-4 and EN 60068-2-6
Shock resistance	Shock test with severity level 2 in accordance with FN 942017-5 and EN 60068-2-27
Corrosion resistance classification CRC	2 - Moderate corrosion stress
Medium temperature	-10 ... 60 °C
Pilot medium	Compressed air in accordance with ISO8573-1:2010 [7:4:4]
Ambient temperature	-10 ... 60 °C
Product weight	351 g
Electrical connection	Plug pattern type C to EN 175301-803 to EN 175301-803
Mounting type	on manifold rail

Feature	Value
	with through hole Optional
Scavenging orifice connection	Non-ducted
Pilot exhaust port 84	M5
Pneumatic connection, port 1	G1/4
Pneumatic connection, port 2	G1/4
Pneumatic connection, port 3	G1/4
Pneumatic connection, port 4	G1/4
Pneumatic connection, port 5	G1/4
Materials note	Conforms to RoHS
Material seals	HNBR NBR TPE-U(PU)
Material housing	Aluminium die cast Painted
Material screws	Galvanised steel