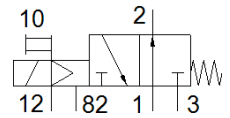
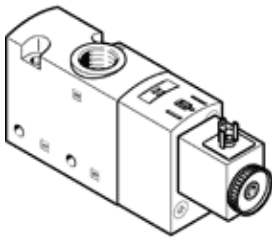


# solenoid valve

## VUVS-LT25-M32U-MZD-G14-F8-1C1

Part number: 8035177

FESTO



## Data sheet

Feature	Value
Valve function	3/2 open, monostable
Type of actuation	electrical
Valve size	26.5 mm
Standard nominal flow rate	1,000 l/min
Operating pressure MPa	-0.09 ... 1 MPa
Operating pressure	-0.9 ... 10 bar
Design structure	Poppet seat
Type of reset	mechanical spring
Authorisation	c UL us - Recognized (OL)
Protection class	IP65 with plug socket to IEC 60529
Nominal size	6.6 mm
Exhaust-air function	throttleable
Sealing principle	soft
Assembly position	Any
Manual override	detenting Pushing
Type of piloting	Piloted
Pilot air supply	external
Flow direction	non reversible
Overlap	Underlap
Pilot pressure MPa	0.25 ... 1 MPa
Pilot pressure	2.5 ... 10 bar
b value	0.3
C value	4.2 l/sbar
Switching time off	27 ms
Switching time on	10 ms
Duty cycle	100 %
Max. positive test pulse with logic 0	2,000 µs
Max. negative test pulse with logic 1	3,600 µs
Characteristic coil data	24 V DC: 3.3 W
Permissible voltage fluctuation	+/- 10 %
Operating medium	Compressed air in accordance with ISO8573-1:2010 [7:4:4]
Note on operating and pilot medium	Lubricated operation possible (subsequently required for further operation)
Vibration resistance	Transport application test at severity level 2 in accordance with FN 942017-4 and EN 60068-2-6
Shock resistance	Shock test with severity level 2 in accordance with FN 942017-5 and EN 60068-2-27
Corrosion resistance classification CRC	2 - Moderate corrosion stress
Medium temperature	-5 ... 60 °C
Pilot medium	Compressed air in accordance with ISO8573-1:2010 [7:4:4]
Ambient temperature	-5 ... 60 °C
Product weight	260 g
Electrical connection	Plug pattern type C to EN 175301-803

Feature	Value
	to EN 175301-803
Mounting type	on manifold rail with through hole Optional
Scavenging orifice connection	Non-ducted
Pilot exhaust port 82	M5
Pilot air port 12	M5
Pneumatic connection, port 1	G1/4
Pneumatic connection, port 2	G1/4
Pneumatic connection, port 3	G1/4
Materials note	Conforms to RoHS
Material seals	HNBR NBR TPE-U(PU)
Material housing	Aluminium die cast Painted
Material screws	Galvanised steel