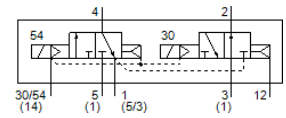
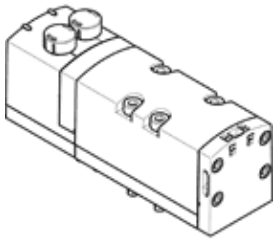


# solenoid valve

## VSVA-B-T32W-AZ-D1-1T1L

Part number: 8034835

FESTO



## Data sheet

Feature	Value
Valve function	2x3/2 open/closed, monostable
Type of actuation	electrical
Width	42 mm
Standard nominal flow rate	1,200 l/min
Operating pressure MPa	-0.09 ... 1 MPa
Operating pressure	-0.9 ... 10 bar
Design structure	Piston slide
Authorisation	c UL us - Recognized (OL)
Protection class	IP65 NEMA 4
Exhaust-air function	throttleable Via throttle plate Via individual sub-base
Sealing principle	soft
Assembly position	Any
Manual override	Covered
Type of piloting	Piloted
Pilot air supply	external
Flow direction	reversible only
Signal status display	LED
Pilot pressure MPa	0.3 ... 1 MPa
Pilot pressure	3 ... 10 bar
Flow rate of valve	1,400 l/min
Flow rate of valve on individual sub-base	1,200 l/min
Optimised flow rate of valve pneumatically concatenated flow	1,300 l/min
Flow rate of pneumatically linked valve	1,200 l/min
Switching time off	28 ms
Switching time on	34 ms
Max. positive test pulse with logic 0	1,600 µs
Max. negative test pulse with logic 1	1,100 µs
Nominal breakaway current per solenoid coil	60 mA up to 30 ms
Characteristic coil data	24 V DC: 1.3 W
Surge strength	2.5 kV
Degree of contamination	3
Permissible voltage fluctuation	+/- 10 %
Operating medium	Compressed air in accordance with ISO8573-1:2010 [7:4:4]
Note on operating and pilot medium	Lubricated operation possible (subsequently required for further operation)
Vibration resistance	Transport application test at severity level 2 in accordance with FN 942017-4 and EN 60068-2-6
Shock resistance	Shock test with severity level 2 in accordance with FN 942017-5 and EN 60068-2-27
Corrosion resistance classification CRC	0 - No corrosion stress
PWIS conformity	VDMA24364-B1/B2-L
Relative air humidity	0 - 90 %
Ambient temperature	-5 ... 50 °C

<b>Feature</b>	<b>Value</b>
Product weight	442 g
Electrical connection	Plug-in as per ISO 5599-2
Mounting type	On sub-base
Auxiliary pilot air port 12/14	Sub-base size 1 to ISO 5599-2
Pilot exhaust port 82/84	Optional Not ducted as per standard Ducted
Pneumatic connection, port 1	Sub-base size 1 to ISO 5599-2
Pneumatic connection, port 2	Sub-base size 1 to ISO 5599-2
Pneumatic connection, port 3	Sub-base size 1 to ISO 5599-2
Pneumatic connection, port 4	Sub-base size 1 to ISO 5599-2
Pneumatic connection, port 5	Sub-base size 1 to ISO 5599-2
Materials note	Conforms to RoHS
Material seals	FPM HNBR NBR
Material housing	Aluminium die cast PA
Material screws	Galvanised steel