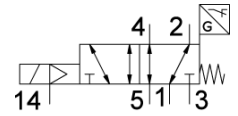
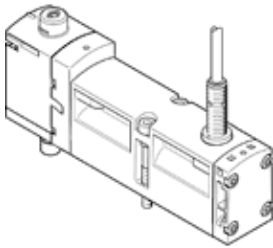


solenoid valve

VSVA-B-M52-MZH-A1-1T1L-APC

Part number: 8033049

FESTO



Data sheet

| Feature | Value |
|--|---|
| Valve function | 5/2 monostable |
| Type of actuation | electrical |
| Width | 26 mm |
| Standard nominal flow rate | 1,100 l/min |
| Operating pressure MPa | -0.09 ... 1 MPa |
| Operating pressure | -0.9 ... 10 bar |
| Design structure | Piston slide |
| Type of reset | mechanical spring |
| KC mark | KC-EMV |
| CE mark (see declaration of conformity) | to EU directive for EMC |
| Protection class | IP65 NEMA 4 |
| Nominal size | 9 mm |
| Exhaust-air function | throttleable Via throttle plate Via individual sub-base |
| Sealing principle | soft |
| Assembly position | Any |
| Manual override | Pushing |
| Type of piloting | Piloted |
| Pilot air supply | external |
| Flow direction | Any |
| Measuring principle | Inductive |
| Overlap | Positive overlap |
| Reverse polarity protection sensor | For all electrical connections |
| Signal status display | LED |
| Switching position sensing | Normal position with sensor |
| Switching status display sensor | LED |
| Pilot pressure MPa | 0.3 ... 1 MPa |
| Pilot pressure | 3 ... 10 bar |
| Flow rate of valve | 1,400 l/min |
| Flow rate of valve on individual sub-base | 1,200 l/min |
| Optimised flow rate of valve pneumatically concatenated flow | 1,350 l/min |
| Flow rate of pneumatically linked valve | 1,100 l/min |
| Switching time off | 54 ms |
| Switching time on | 20 ms |
| Valve - sensor switching time on | 60 ms |
| Valve - sensor switching time off | 11 ms |
| Duty cycle | 100 % |
| Max. positive test pulse with logic 0 | 1,200 µs |
| Max. negative test pulse with logic 1 | 1,100 µs |
| Nominal operating voltage DC | 24 V |
| Switch output | PNP |
| Characteristic coil data | 24 V DC: 1.6 W |
| Surge strength | 2.5 kV |
| Degree of contamination | 3 |

| Feature | Value |
|---|--|
| Permissible voltage fluctuation | +/- 10 % |
| Operating medium | Compressed air in accordance with ISO8573-1:2010 [7:4:4] |
| Note on operating and pilot medium | Lubricated operation possible (subsequently required for further operation) |
| Vibration resistance | Transport application test at severity level 2 in accordance with FN 942017-4 and EN 60068-2-6 |
| Shock resistance | Shock test with severity level 2 in accordance with FN 942017-5 and EN 60068-2-27 |
| Corrosion resistance classification CRC | 0 - No corrosion stress |
| PWIS conformity | VDMA24364-B1/B2-L |
| Medium temperature | -5 ... 50 °C |
| Relative air humidity | 0 - 90 % |
| Sound pressure level | 85 dB(A) |
| Ambient temperature | -5 ... 50 °C |
| Max. tightening torque, valve mounting | 1.8 ... 2.2 Nm |
| Product weight | 307 g |
| Operating voltage range, DC sensor | 10 ... 30 V |
| Short-circuit strength sensor | Pulsing |
| Idle current sensor | ≤ 10 mA |
| Max. output current sensor | 200 mA |
| Max. switching frequency sensor | 5,000 Hz |
| Residual ripple sensor | ± 10 % |
| Voltage drop sensor | ≤ 2 V |
| Electrical connection | 4-pin Plug according to ISO 15407-2 |
| Sensor connection | Cable 2,5 m |
| Mounting type | On sub-base |
| Auxiliary pilot air port 12/14 | Manifold block, size 26 mm acc. to ISO 15407-2 |
| Pilot exhaust port 82/84 | Optional Ducted Non-ducted |
| Pneumatic connection, port 1 | Manifold block, size 26 mm acc. to ISO 15407-2 |
| Pneumatic connection, port 2 | Manifold block, size 26 mm acc. to ISO 15407-2 |
| Pneumatic connection, port 3 | Manifold block, size 26 mm acc. to ISO 15407-2 |
| Pneumatic connection, port 4 | Manifold block, size 26 mm acc. to ISO 15407-2 |
| Pneumatic connection, port 5 | Manifold block, size 26 mm acc. to ISO 15407-2 |
| Materials note | Conforms to RoHS |
| Material seals | FPM NBR |
| Material housing | Aluminium die cast PA |
| Material screws | Galvanised steel |
| Switching element function | Normally closed contact |