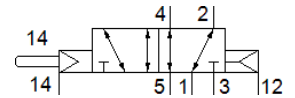
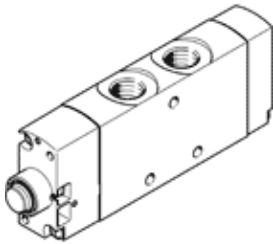


# stem actuated valve VMEF-SCZ-M52-E-N14

Part number: 8031325

FESTO



## Data sheet

| Feature                                 | Value   |
|---|---|
| Valve function                          | 5/2 monostable  |
| Type of actuation                       | mechanical  |
| Width                                   | 20 mm   |
| Standard nominal flow rate              | 1,200 l/min   |
| Operating pressure MPa                  | -0.095 ... 1 MPa  |
| Operating pressure                      | -0.95 ... 10 bar  |
| Design structure                        | Piston slide  |
| Type of reset                           | Air spring  |
| Nominal size                            | 7 mm  |
| Instructions for use                    | Do not use as mechanical stop   |
| Sealing principle                       | soft  |
| Assembly position                       | Any   |
| Type of piloting                        | Piloted   |
| Pilot air supply                        | external  |
| Flow direction                          | reversible  |
| Overlap                                 | Positive overlap  |
| Pilot pressure MPa                      | 0.25 ... 1 MPa  |
| Pilot pressure                          | 2.5 ... 10 bar<br>36.25 ... 145 psi   |
| Max. switching frequency                | 3 Hz  |
| Operating medium                        | Compressed air in accordance with ISO8573-1:2010 [7:-:]                     |
| Note on operating and pilot medium      | Lubricated operation possible (subsequently required for further operation) |
| Corrosion resistance classification CRC | 2 - Moderate corrosion stress   |
| PWIS conformity                         | VDMA24364-B1/B2-L   |
| Medium temperature                      | -10 ... 60 °C   |
| Ambient temperature                     | -10 ... 60 °C   |
| Actuating force                         | 14 N  |
| Product weight                          | 183 g   |
| Mounting type                           | with through hole   |
| Auxiliary pilot air port 12/14          | M5  |
| Pneumatic connection, port 1            | 1/4 NPT   |
| Pneumatic connection, port 2            | 1/4 NPT   |
| Pneumatic connection, port 3            | 1/4 NPT   |
| Pneumatic connection, port 4            | 1/4 NPT   |
| Pneumatic connection, port 5            | 1/4 NPT   |
| Materials note                          | Conforms to RoHS  |
| Material cover                          | PA-reinforced   |
| Material seals                          | NBR   |
| Material housing                        | Anodised wrought aluminium alloy  |