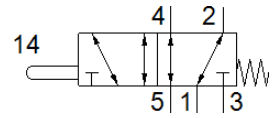
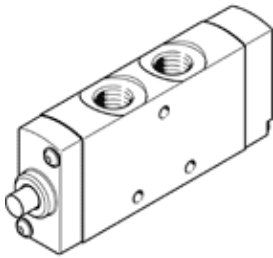


stem actuated valve VMEF-S-M52-M-G14

Part number: 8031302

★ Core product range

FESTO



Data sheet

Feature	Value
Valve function	5/2 monostable
Type of actuation	mechanical
Width	20 mm
Standard nominal flow rate	1,200 l/min
Operating pressure MPa	-0.095 ... 1 MPa
Operating pressure	-0.95 ... 10 bar
Design structure	Piston slide
Type of reset	mechanical spring
Nominal size	7 mm
Instructions for use	Do not use as mechanical stop
Sealing principle	soft
Assembly position	Any
Type of piloting	direct
Flow direction	reversible
Overlap	Positive overlap
Max. switching frequency	3 Hz
Operating medium	Compressed air in accordance with ISO8573-1:2010 [7:-:-]
Note on operating and pilot medium	Lubricated operation possible (subsequently required for further operation)
Corrosion resistance classification CRC	2 - Moderate corrosion stress
PWIS conformity	VDMA24364-B1/B2-L
Medium temperature	-10 ... 60 °C
Ambient temperature	-10 ... 60 °C
Actuating force	43 N
Product weight	178 g
Mounting type	with through hole
Pneumatic connection, port 1	G1/4
Pneumatic connection, port 2	G1/4
Pneumatic connection, port 3	G1/4
Pneumatic connection, port 4	G1/4
Pneumatic connection, port 5	G1/4
Materials note	Conforms to RoHS
Material cover	PA-reinforced
Material seals	NBR
Material housing	Anodised wrought aluminium alloy